



Test Report

Report No. A2230036037101

Page 1 of 27

Company Name YUNG LI CO.,LTD

shown on Report
Address DA PU INDUSTRIAL ZONE,GANG ZI,CHANG PING TOWN, DONG GUAN CITY,GUANG DONG 523571 CHINA

The following sample(s) and sample information was/were submitted and identified by/on the behalf of the applicant

CTI Sample ID	Sample Name(s)	Part No.
001	POWER CORD	TPE BLACK
002		TPE WHITE
003		TPE BROWN
004		TPE BLUE
005		TPE YELLOW
006		TPE GREEN
007		TPE GRAY
008		INNERBODY
009		INNER CASE
010		CABLE COPPER
011		COPPER ALLOY
012		TERMINAL COPPER

Sample Received Date Feb. 9, 2023
Testing Period Feb. 9, 2023 to Feb. 15, 2023

Test Requested As specified by client, to test Lead (Pb), Cadmium (Cd), Mercury (Hg), Hexavalent Chromium (Cr(VI)), Polybrominated Biphenyls (PBBs), Polybrominated Diphenyl Ethers (PBDEs), Phthalates (DBP, BBP, DEHP, DIBP), Fluorine (F), Chlorine (Cl), Bromine (Br), Iodine (I), Perfluorooctane Sulfonates(PFOS), Phthalates,Polycyclic Aromatic Hydrocarbons (PAHs), Tetrabromobisphenol A (TBBP-A), Red phosphorus in the submitted sample(s).

Test Method/Test Result(s) Please refer to the following page(s).

 Approved by Hill Zheng
 Hill Zheng
 Technical Manager

 Date Feb. 15, 2023

No. M661471247

 Centre Testing International Group Co.,Ltd.
 CTI Building, Xing Dong Community, Xin'an Sub-district, Bao'an District, Shenzhen City, Guangdong Province, P.R. China

Test Report

Report No. A2230036037101

Page 2 of 27

Test Method

Tested Item(s)	Test Method	Measured Equipment(s)
Lead (Pb)	IEC 62321-5:2013	ICP-OES
Cadmium (Cd)	IEC 62321-5:2013	ICP-OES
Mercury (Hg)	IEC 62321-4:2013+AMD1:2017 CSV	ICP-OES
Hexavalent Chromium (Cr(VI))	IEC 62321-7-1:2015	UV-Vis
	IEC 62321-7-2:2017 and/or determination of Total Chromium by IEC 62321-5:2013	UV-Vis/ICP-OES
Polybrominated Biphenyls (PBBs)	IEC 62321-6:2015	GC-MS
Polybrominated Diphenyl Ethers (PBDEs)	IEC 62321-6:2015	GC-MS
Phthalates (DBP, BBP, DEHP, DIBP)	IEC 62321-8:2017	GC-MS
Fluorine (F)	Refer to EN 14582:2016	IC
Chlorine (Cl)	Refer to EN 14582:2016	IC
Bromine (Br)	Refer to EN 14582:2016	IC
Iodine (I)	Refer to EN 14582:2016	IC
Perfluorooctane Sulfonates(PFOS)	Refer to US EPA 3550C:2007 & US EPA 8321B:2007	LC-MS-MS
Phthalates	Refer to EN 14372:2004(E)	GC-MS
Red phosphorus	Refer to GB/T 9722-2006	PY-GC-MS
Polycyclic Aromatic Hydrocarbons (PAHs)	AfPS GS 2019:01 PAK	GC-MS
Tetrabromobisphenol A (TBBP-A)	Refer to US EPA 3550C:2007 & US EPA 8270E:2018	GC-MS

Test Report

Report No. A2230036037101

Page 3 of 27

Test Result(s)

Tested Item(s)	Result			MDL
	001	002	003	
Lead (Pb)	N.D.	N.D.	N.D.	2 mg/kg
Cadmium (Cd)	N.D.	N.D.	N.D.	2 mg/kg
Mercury (Hg)	N.D.	N.D.	N.D.	2 mg/kg
Hexavalent Chromium (Cr(VI))	N.D.	N.D.	N.D.	8 mg/kg
	--	--	--	0.10 µg/cm ² (LOQ)

Tested Item(s)	Result			MDL
	004	005	006	
Lead (Pb)	N.D.	N.D.	N.D.	2 mg/kg
Cadmium (Cd)	N.D.	N.D.	N.D.	2 mg/kg
Mercury (Hg)	N.D.	N.D.	N.D.	2 mg/kg
Hexavalent Chromium (Cr(VI))	N.D.	N.D.	N.D.	8 mg/kg
	--	--	--	0.10 µg/cm ² (LOQ)

Tested Item(s)	Result			MDL
	007	008	009	
Lead (Pb)	N.D.	N.D.	N.D.	2 mg/kg
Cadmium (Cd)	N.D.	N.D.	N.D.	2 mg/kg
Mercury (Hg)	N.D.	N.D.	N.D.	2 mg/kg
Hexavalent Chromium (Cr(VI))	N.D.	N.D.	N.D.	8 mg/kg
	--	--	--	0.10 µg/cm ² (LOQ)

Tested Item(s)	Result			MDL
	010	011	012	
Lead (Pb)	N.D.	19 mg/kg	46 mg/kg	2 mg/kg
Cadmium (Cd)	N.D.	N.D.	N.D.	2 mg/kg
Mercury (Hg)	N.D.	N.D.	N.D.	2 mg/kg
Hexavalent Chromium (Cr(VI))	--	--	--	8 mg/kg
	N.D.▼	N.D.▼	N.D.▼	0.10 µg/cm ² (LOQ)

Test Report

Report No. A2230036037101

Page 4 of 27

Tested Item(s)	Result			MDL
	001	002	003	
Polybrominated Biphenyls (PBBs)				
Monobromobiphenyl	N.D.	N.D.	N.D.	5 mg/kg
Dibromobiphenyl	N.D.	N.D.	N.D.	5 mg/kg
Tribromobiphenyl	N.D.	N.D.	N.D.	5 mg/kg
Tetrabromobiphenyl	N.D.	N.D.	N.D.	5 mg/kg
Pentabromobiphenyl	N.D.	N.D.	N.D.	5 mg/kg
Hexabromobiphenyl	N.D.	N.D.	N.D.	5 mg/kg
Heptabromobiphenyl	N.D.	N.D.	N.D.	5 mg/kg
Octabromobiphenyl	N.D.	N.D.	N.D.	5 mg/kg
Nonabromobiphenyl	N.D.	N.D.	N.D.	5 mg/kg
Decabromobiphenyl	N.D.	N.D.	N.D.	5 mg/kg

Tested Item(s)	Result			MDL
	004	005	006	
Polybrominated Biphenyls (PBBs)				
Monobromobiphenyl	N.D.	N.D.	N.D.	5 mg/kg
Dibromobiphenyl	N.D.	N.D.	N.D.	5 mg/kg
Tribromobiphenyl	N.D.	N.D.	N.D.	5 mg/kg
Tetrabromobiphenyl	N.D.	N.D.	N.D.	5 mg/kg
Pentabromobiphenyl	N.D.	N.D.	N.D.	5 mg/kg
Hexabromobiphenyl	N.D.	N.D.	N.D.	5 mg/kg
Heptabromobiphenyl	N.D.	N.D.	N.D.	5 mg/kg
Octabromobiphenyl	N.D.	N.D.	N.D.	5 mg/kg
Nonabromobiphenyl	N.D.	N.D.	N.D.	5 mg/kg
Decabromobiphenyl	N.D.	N.D.	N.D.	5 mg/kg

Test Report

Report No. A2230036037101

Page 5 of 27

Tested Item(s)	Result			MDL
	007	008	009	
Polybrominated Biphenyls (PBBs)				
Monobromobiphenyl	N.D.	N.D.	N.D.	5 mg/kg
Dibromobiphenyl	N.D.	N.D.	N.D.	5 mg/kg
Tribromobiphenyl	N.D.	N.D.	N.D.	5 mg/kg
Tetrabromobiphenyl	N.D.	N.D.	N.D.	5 mg/kg
Pentabromobiphenyl	N.D.	N.D.	N.D.	5 mg/kg
Hexabromobiphenyl	N.D.	N.D.	N.D.	5 mg/kg
Heptabromobiphenyl	N.D.	N.D.	N.D.	5 mg/kg
Octabromobiphenyl	N.D.	N.D.	N.D.	5 mg/kg
Nonabromobiphenyl	N.D.	N.D.	N.D.	5 mg/kg
Decabromobiphenyl	N.D.	N.D.	N.D.	5 mg/kg

Tested Item(s)	Result			MDL
	001	002	003	
Polybrominated Diphenyl Ethers (PBDEs)				
Monobromodiphenyl ether	N.D.	N.D.	N.D.	5 mg/kg
Dibromodiphenyl ether	N.D.	N.D.	N.D.	5 mg/kg
Tribromodiphenyl ether	N.D.	N.D.	N.D.	5 mg/kg
Tetrabromodiphenyl ether	N.D.	N.D.	N.D.	5 mg/kg
Pentabromodiphenyl ether	N.D.	N.D.	N.D.	5 mg/kg
Hexabromodiphenyl ether	N.D.	N.D.	N.D.	5 mg/kg
Heptabromodiphenyl ether	N.D.	N.D.	N.D.	5 mg/kg
Octabromodiphenyl ether	N.D.	N.D.	N.D.	5 mg/kg
Nonabromodiphenyl ether	N.D.	N.D.	N.D.	5 mg/kg
Decabromodiphenyl ether	N.D.	N.D.	N.D.	5 mg/kg

Test Report

Report No. A2230036037101

Page 6 of 27

Tested Item(s)	Result			MDL
	004	005	006	
Polybrominated Diphenyl Ethers (PBDEs)				
Monobromodiphenyl ether	N.D.	N.D.	N.D.	5 mg/kg
Dibromodiphenyl ether	N.D.	N.D.	N.D.	5 mg/kg
Tribromodiphenyl ether	N.D.	N.D.	N.D.	5 mg/kg
Tetrabromodiphenyl ether	N.D.	N.D.	N.D.	5 mg/kg
Pentabromodiphenyl ether	N.D.	N.D.	N.D.	5 mg/kg
Hexabromodiphenyl ether	N.D.	N.D.	N.D.	5 mg/kg
Heptabromodiphenyl ether	N.D.	N.D.	N.D.	5 mg/kg
Octabromodiphenyl ether	N.D.	N.D.	N.D.	5 mg/kg
Nonabromodiphenyl ether	N.D.	N.D.	N.D.	5 mg/kg
Decabromodiphenyl ether	N.D.	N.D.	N.D.	5 mg/kg

Tested Item(s)	Result			MDL
	007	008	009	
Polybrominated Diphenyl Ethers (PBDEs)				
Monobromodiphenyl ether	N.D.	N.D.	N.D.	5 mg/kg
Dibromodiphenyl ether	N.D.	N.D.	N.D.	5 mg/kg
Tribromodiphenyl ether	N.D.	N.D.	N.D.	5 mg/kg
Tetrabromodiphenyl ether	N.D.	N.D.	N.D.	5 mg/kg
Pentabromodiphenyl ether	N.D.	N.D.	N.D.	5 mg/kg
Hexabromodiphenyl ether	N.D.	N.D.	N.D.	5 mg/kg
Heptabromodiphenyl ether	N.D.	N.D.	N.D.	5 mg/kg
Octabromodiphenyl ether	N.D.	N.D.	N.D.	5 mg/kg
Nonabromodiphenyl ether	N.D.	N.D.	N.D.	5 mg/kg
Decabromodiphenyl ether	N.D.	N.D.	N.D.	5 mg/kg

Test Report

Report No. A2230036037101

Page 7 of 27

Tested Item(s)	Result			MDL
	001	002	003	
Phthalates (DBP, BBP, DEHP, DIBP)				
Dibutyl phthalate (DBP) CAS#:84-74-2	N.D.	N.D.	N.D.	50 mg/kg
Butyl benzyl phthalate (BBP) CAS#:85-68-7	N.D.	N.D.	N.D.	50 mg/kg
Di-(2-ethylhexyl) phthalate (DEHP) CAS#:117-81-7	N.D.	N.D.	N.D.	50 mg/kg
Diisobutyl phthalate (DIBP) CAS#:84-69-5	N.D.	N.D.	N.D.	50 mg/kg

Tested Item(s)	Result			MDL
	004	005	006	
Phthalates (DBP, BBP, DEHP, DIBP)				
Dibutyl phthalate (DBP) CAS#:84-74-2	N.D.	N.D.	N.D.	50 mg/kg
Butyl benzyl phthalate (BBP) CAS#:85-68-7	N.D.	N.D.	N.D.	50 mg/kg
Di-(2-ethylhexyl) phthalate (DEHP) CAS#:117-81-7	N.D.	N.D.	N.D.	50 mg/kg
Diisobutyl phthalate (DIBP) CAS#:84-69-5	N.D.	N.D.	N.D.	50 mg/kg

Tested Item(s)	Result			MDL
	007	008	009	
Phthalates (DBP, BBP, DEHP, DIBP)				
Dibutyl phthalate (DBP) CAS#:84-74-2	N.D.	N.D.	N.D.	50 mg/kg
Butyl benzyl phthalate (BBP) CAS#:85-68-7	N.D.	N.D.	N.D.	50 mg/kg
Di-(2-ethylhexyl) phthalate (DEHP) CAS#:117-81-7	N.D.	N.D.	N.D.	50 mg/kg
Diisobutyl phthalate (DIBP) CAS#:84-69-5	N.D.	N.D.	N.D.	50 mg/kg

Test Report

Report No. A2230036037101

Page 8 of 27

Tested Item(s)	Result			MDL
	001	002	003	
Fluorine (F)	N.D.	N.D.	N.D.	10 mg/kg
Chlorine (Cl)	178 mg/kg	177 mg/kg	185 mg/kg	10 mg/kg
Bromine (Br)	N.D.	N.D.	N.D.	10 mg/kg
Iodine (I)	N.D.	N.D.	N.D.	10 mg/kg

Tested Item(s)	Result			MDL
	004	005	006	
Fluorine (F)	N.D.	N.D.	N.D.	10 mg/kg
Chlorine (Cl)	188 mg/kg	167 mg/kg	185 mg/kg	10 mg/kg
Bromine (Br)	N.D.	N.D.	N.D.	10 mg/kg
Iodine (I)	N.D.	N.D.	N.D.	10 mg/kg

Tested Item(s)	Result			MDL
	007	008	009	
Fluorine (F)	N.D.	93 mg/kg	756 mg/kg	10 mg/kg
Chlorine (Cl)	187 mg/kg	N.D.	N.D.	10 mg/kg
Bromine (Br)	N.D.	N.D.	24 mg/kg	10 mg/kg
Iodine (I)	N.D.	N.D.	N.D.	10 mg/kg

Tested Item(s)	Result			MDL
	001	002	003	
Perfluorooctane Sulfonates (PFOS)	N.D.	N.D.	N.D.	0.010 mg/kg

Tested Item(s)	Result			MDL
	004	005	006	
Perfluorooctane Sulfonates (PFOS)	N.D.	N.D.	N.D.	0.010 mg/kg

Tested Item(s)	Result			MDL
	007	008	009	
Perfluorooctane Sulfonates (PFOS)	N.D.	N.D.	N.D.	0.010 mg/kg

Test Report

Report No. A2230036037101

Page 9 of 27

Tested Item(s)	Result			MDL
	001	002	003	
Phthalates				
Dibutyl phthalate (DBP) CAS#:84-74-2	N.D.	N.D.	N.D.	30 mg/kg
Butyl benzyl phthalate (BBP) CAS#:85-68-7	N.D.	N.D.	N.D.	30 mg/kg
Di-(2-ethylhexyl) phthalate (DEHP) CAS#:117-81-7	N.D.	N.D.	N.D.	30 mg/kg
Di-n-octyl phthalate (DNOP) CAS#:117-84-0	N.D.	N.D.	N.D.	30 mg/kg
Di-isononyl phthalate (DINP) CAS#:28553-12-0,68515-48-0	N.D.	N.D.	N.D.	50 mg/kg
Di-iso-decyl phthalate (DIDP) CAS#:26761-40-0,68515-49-1	N.D.	N.D.	N.D.	50 mg/kg
Dimethyl phthalate (DMP) CAS#:131-11-3	N.D.	N.D.	N.D.	30 mg/kg
Diethyl phthalate (DEP) CAS#:84-66-2	N.D.	N.D.	N.D.	30 mg/kg
Dipropyl phthalate (DPrP) CAS#:131-16-8	N.D.	N.D.	N.D.	30 mg/kg
Diisobutyl phthalate (DIBP) CAS#:84-69-5	N.D.	N.D.	N.D.	30 mg/kg
Dipentyl phthalate (DPP/DPENP) CAS#:131-18-0	N.D.	N.D.	N.D.	30 mg/kg
Diheptyl phthalate (DHP) CAS#:3648-21-3	N.D.	N.D.	N.D.	30 mg/kg
Dicyclohexyl phthalate (DCHP) CAS#:84-61-7	N.D.	N.D.	N.D.	30 mg/kg
Diisooctyl phthalate (DIOP) CAS#:27554-26-3	N.D.	N.D.	N.D.	50 mg/kg
Dinonyl phthalate (DNP) CAS#:84-76-4	N.D.	N.D.	N.D.	30 mg/kg
Diisononyl adipate (DINA) CAS#:33703-08-1	N.D.	N.D.	N.D.	50 mg/kg

Test Report

Report No. A2230036037101

Page 10 of 27

Tested Item(s)	Result			MDL
	004	005	006	
Phthalates				
Dibutyl phthalate (DBP) CAS#:84-74-2	N.D.	N.D.	N.D.	30 mg/kg
Butyl benzyl phthalate (BBP) CAS#:85-68-7	N.D.	N.D.	N.D.	30 mg/kg
Di-(2-ethylhexyl) phthalate (DEHP) CAS#:117-81-7	N.D.	N.D.	N.D.	30 mg/kg
Di-n-octyl phthalate (DNOP) CAS#:117-84-0	N.D.	N.D.	N.D.	30 mg/kg
Di-isononyl phthalate (DINP) CAS#:28553-12-0,68515-48-0	N.D.	N.D.	N.D.	50 mg/kg
Di-iso-decyl phthalate (DIDP) CAS#:26761-40-0,68515-49-1	N.D.	N.D.	N.D.	50 mg/kg
Dimethyl phthalate (DMP) CAS#:131-11-3	N.D.	N.D.	N.D.	30 mg/kg
Diethyl phthalate (DEP) CAS#:84-66-2	N.D.	N.D.	N.D.	30 mg/kg
Dipropyl phthalate (DPrP) CAS#:131-16-8	N.D.	N.D.	N.D.	30 mg/kg
Diisobutyl phthalate (DIBP) CAS#:84-69-5	N.D.	N.D.	N.D.	30 mg/kg
Dipentyl phthalate (DPP/DPENP) CAS#:131-18-0	N.D.	N.D.	N.D.	30 mg/kg
Diheptyl phthalate (DHP) CAS#:3648-21-3	N.D.	N.D.	N.D.	30 mg/kg
Dicyclohexyl phthalate (DCHP) CAS#:84-61-7	N.D.	N.D.	N.D.	30 mg/kg
Diisooctyl phthalate (DIOP) CAS#:27554-26-3	N.D.	N.D.	N.D.	50 mg/kg
Dinonyl phthalate (DNP) CAS#:84-76-4	N.D.	N.D.	N.D.	30 mg/kg
Diisononyl adipate (DINA) CAS#:33703-08-1	N.D.	N.D.	N.D.	50 mg/kg

Test Report

Report No. A2230036037101

Page 11 of 27

Tested Item(s)	Result			MDL
	007	008	009	
Phthalates				
Dibutyl phthalate (DBP) CAS#:84-74-2	N.D.	N.D.	N.D.	30 mg/kg
Butyl benzyl phthalate (BBP) CAS#:85-68-7	N.D.	N.D.	N.D.	30 mg/kg
Di-(2-ethylhexyl) phthalate (DEHP) CAS#:117-81-7	N.D.	N.D.	N.D.	30 mg/kg
Di-n-octyl phthalate (DNOP) CAS#:117-84-0	N.D.	N.D.	N.D.	30 mg/kg
Di-isononyl phthalate (DINP) CAS#:28553-12-0,68515-48-0	N.D.	N.D.	N.D.	50 mg/kg
Di-iso-decyl phthalate (DIDP) CAS#:26761-40-0,68515-49-1	N.D.	N.D.	N.D.	50 mg/kg
Dimethyl phthalate (DMP) CAS#:131-11-3	N.D.	N.D.	N.D.	30 mg/kg
Diethyl phthalate (DEP) CAS#:84-66-2	N.D.	N.D.	N.D.	30 mg/kg
Dipropyl phthalate (DPrP) CAS#:131-16-8	N.D.	N.D.	N.D.	30 mg/kg
Diisobutyl phthalate (DIBP) CAS#:84-69-5	N.D.	N.D.	N.D.	30 mg/kg
Dipentyl phthalate (DPP/DPENP) CAS#:131-18-0	N.D.	N.D.	N.D.	30 mg/kg
Diheptyl phthalate (DHP) CAS#:3648-21-3	N.D.	N.D.	N.D.	30 mg/kg
Dicyclohexyl phthalate (DCHP) CAS#:84-61-7	N.D.	N.D.	N.D.	30 mg/kg
Diisooctyl phthalate (DIOP) CAS#:27554-26-3	N.D.	N.D.	N.D.	50 mg/kg
Dinonyl phthalate (DNP) CAS#:84-76-4	N.D.	N.D.	N.D.	30 mg/kg
Diisononyl adipate (DINA) CAS#:33703-08-1	N.D.	N.D.	N.D.	50 mg/kg

Test Report

Report No. A2230036037101

Page 12 of 27

Tested Item(s)	Result			MDL
	001	002	003	
Tetrabromobisphenol A (TBBP-A)	N.D.	N.D.	N.D.	5 mg/kg

Tested Item(s)	Result			MDL
	004	005	006	
Tetrabromobisphenol A (TBBP-A)	N.D.	N.D.	N.D.	5 mg/kg

Tested Item(s)	Result			MDL
	007	008	009	
Tetrabromobisphenol A (TBBP-A)	N.D.	N.D.	N.D.	5 mg/kg

Tested Item(s)	Result				MDL
	001	002	003	004	
Polycyclic Aromatic Hydrocarbons (PAHs)					
Naphthalene	1.2 mg/kg	1.3 mg/kg	1.2 mg/kg	1.3 mg/kg	0.2 mg/kg
Phenanthrene	N.D.	N.D.	N.D.	N.D.	0.2 mg/kg
Anthracene	N.D.	N.D.	N.D.	N.D.	0.2 mg/kg
Fluoranthene	N.D.	N.D.	N.D.	N.D.	0.2 mg/kg
Pyrene	N.D.	N.D.	N.D.	N.D.	0.2 mg/kg
Chrysene	N.D.	N.D.	N.D.	N.D.	0.2 mg/kg
Benzo(a)anthracene	N.D.	N.D.	N.D.	N.D.	0.2 mg/kg
Benzo(b)fluoranthene	N.D.	N.D.	N.D.	N.D.	0.2 mg/kg
Benzo(k)fluoranthene	N.D.	N.D.	N.D.	N.D.	0.2 mg/kg
Benzo(j)fluoranthene	N.D.	N.D.	N.D.	N.D.	0.2 mg/kg
Benzo(a)pyrene	N.D.	N.D.	N.D.	N.D.	0.2 mg/kg
Benzo(e)pyrene	N.D.	N.D.	N.D.	N.D.	0.2 mg/kg
Dibenzo(a,h)anthracene	N.D.	N.D.	N.D.	N.D.	0.2 mg/kg
Benzo(g,h,i)perylene	N.D.	N.D.	N.D.	N.D.	0.2 mg/kg
Indenol(1,2,3-cd)pyrene	N.D.	N.D.	N.D.	N.D.	0.2 mg/kg
Acenaphthene	N.D.	N.D.	N.D.	N.D.	0.2 mg/kg
Fluorene	N.D.	N.D.	N.D.	N.D.	0.2 mg/kg
Acenaphthylene	N.D.	N.D.	N.D.	N.D.	0.2 mg/kg

Test Report

Report No. A2230036037101

Page 13 of 27

Tested Item(s)	Result				MDL
	005	006	007	008	
Polycyclic Aromatic Hydrocarbons (PAHs)					
Naphthalene	0.8 mg/kg	1.3 mg/kg	1.2 mg/kg	N.D.	0.2 mg/kg
Phenanthrene	N.D.	N.D.	N.D.	N.D.	0.2 mg/kg
Anthracene	N.D.	N.D.	N.D.	N.D.	0.2 mg/kg
Fluoranthene	N.D.	N.D.	N.D.	N.D.	0.2 mg/kg
Pyrene	N.D.	N.D.	N.D.	N.D.	0.2 mg/kg
Chrysene	N.D.	N.D.	N.D.	N.D.	0.2 mg/kg
Benzo(a)anthracene	N.D.	N.D.	N.D.	N.D.	0.2 mg/kg
Benzo(b)fluoranthene	N.D.	N.D.	N.D.	N.D.	0.2 mg/kg
Benzo(k)fluoranthene	N.D.	N.D.	N.D.	N.D.	0.2 mg/kg
Benzo(j)fluoranthene	N.D.	N.D.	N.D.	N.D.	0.2 mg/kg
Benzo(a)pyrene	N.D.	N.D.	N.D.	N.D.	0.2 mg/kg
Benzo(e)pyrene	N.D.	N.D.	N.D.	N.D.	0.2 mg/kg
Dibenzo(a,h)anthracene	N.D.	N.D.	N.D.	N.D.	0.2 mg/kg
Benzo(g,h,i)perylene	N.D.	N.D.	N.D.	N.D.	0.2 mg/kg
Indenol(1,2,3-cd)pyrene	N.D.	N.D.	N.D.	N.D.	0.2 mg/kg
Acenaphthene	N.D.	N.D.	N.D.	N.D.	0.2 mg/kg
Fluorene	N.D.	N.D.	N.D.	N.D.	0.2 mg/kg
Acenaphthylene	N.D.	N.D.	N.D.	N.D.	0.2 mg/kg

Test Report

Report No. A2230036037101

Page 14 of 27

Tested Item(s)	Result		MDL
	009		
Polycyclic Aromatic Hydrocarbons (PAHs)			
Naphthalene	N.D.		0.2 mg/kg
Phenanthrene	N.D.		0.2 mg/kg
Anthracene	N.D.		0.2 mg/kg
Fluoranthene	N.D.		0.2 mg/kg
Pyrene	N.D.		0.2 mg/kg
Chrysene	N.D.		0.2 mg/kg
Benzo(a)anthracene	N.D.		0.2 mg/kg
Benzo(b)fluoranthene	N.D.		0.2 mg/kg
Benzo(k)fluoranthene	N.D.		0.2 mg/kg
Benzo(j)fluoranthene	N.D.		0.2 mg/kg
Benzo(a)pyrene	N.D.		0.2 mg/kg
Benzo(e)pyrene	N.D.		0.2 mg/kg
Dibenzo(a,h)anthracene	N.D.		0.2 mg/kg
Benzo(g,h,i)perylene	N.D.		0.2 mg/kg
Indenol(1,2,3-cd)pyrene	N.D.		0.2 mg/kg
Acenaphthene	N.D.		0.2 mg/kg
Fluorene	N.D.		0.2 mg/kg
Acenaphthylene	N.D.		0.2 mg/kg

Tested Item(s)	Result			MDL
	001	002	003	
Red phosphorus	Negative*	Negative*	Negative*	500 mg/kg

Tested Item(s)	Result			MDL
	004	005	006	
Red phosphorus	Negative*	Negative*	Negative*	500 mg/kg

Tested Item(s)	Result			MDL
	007	008	009	
Red phosphorus	Negative*	Negative*	Negative*	500 mg/kg

Test Report

Report No. A2230036037101

Page 15 of 27

Sample/Part Description

No.	CTI Sample ID	Description
1	001	Black plastic grains
2	002	White plastic grains
3	003	Brown plastic grains
4	004	Blue plastic grains
5	005	Yellow plastic grains
6	006	Green plastic grains
7	007	Grey plastic grains
8	008	White plastic
9	009	Black plastic
10	010	Cupreous metal
11	011	Silvery metal
12	012	Golden metal

Remark: The sample(s) had been dissolved totally tested for Lead, Cadmium, Mercury.

-MDL = Method Detection Limit

-N.D. = Not Detected (<MDL or LOQ)

-mg/kg = ppm = parts per million

-LOQ = Limit of Quantification, The LOQ of Hexavalent chromium is 0.10 $\mu\text{g}/\text{cm}^2$

-▼The sample is negative for Cr(VI) – The Cr(VI) concentration is below 0.10 $\mu\text{g}/\text{cm}^2$. The coating is considered a non-Cr(VI) based coating.

-Negative = Not Contained

-The red phosphorus is qualified by PY-GC-MS method which detect pyrolysis products P₄ of red phosphorus. But there is a false positive risk by performing this method, since P₄ could also generate while the phosphate and organic phosphate coexist with some strong oxidizing or reductant agent in pyrolysis process.

-*Result for reference only.

Note: The testing data and result(s) in this report is(are) just for scientific research, education, internal quality control and product development etc.

Test Report

Report No. A2230036037101

Page 16 of 27

Maximum PAHs limits (mg/kg) for the materials with relevant contact/grip and operating surfaces that are to be categorised based on the results of the risk assessment

Parameters	Category 1	Category 2		Category 3	
	Materials intended to be placed in the mouth, or materials in toys according to Directive 2009/48/EC or materials for the use by children up to 3 years of age coming into long-term contact with skin (more than 30s) during the intended use	Materials not covered by category 1, coming into long-term contact (more than 30s) or short-term repetitive contact** with skin during the intended or foreseeable use	Use by children (< 14 years) (include both active and passive direct contact)	Other consumer products	Use by children (< 14 years) (include both active and passive direct contact)
Benzo(a)pyrene	< 0.2	< 0.2	< 0.5	< 0.5	< 1
Benzo(e)pyrene	< 0.2	< 0.2	< 0.5	< 0.5	< 1
Benzo(a)anthracene	< 0.2	< 0.2	< 0.5	< 0.5	< 1
Benzo(b)fluoranthene	< 0.2	< 0.2	< 0.5	< 0.5	< 1
Benzo(j)fluoranthene	< 0.2	< 0.2	< 0.5	< 0.5	< 1
Benzo(k)fluoranthene	< 0.2	< 0.2	< 0.5	< 0.5	< 1
Chrysene	< 0.2	< 0.2	< 0.5	< 0.5	< 1
Dibenz(a,h)anthracene	< 0.2	< 0.2	< 0.5	< 0.5	< 1
Benzo(g,h,i)perylene	< 0.2	< 0.2	< 0.5	< 0.5	< 1
Indenol(1,2,3-cd)pyrene	< 0.2	< 0.2	< 0.5	< 0.5	< 1
Phenanthrene, Anthracene, Fluoranthene, Pyrene	< 1 Sum	< 5 Sum	< 10 Sum	< 20 Sum	< 50 Sum
Naphthalene	< 1	< 2		< 10	
Sum 15 PAHs	< 1	< 5	< 10	< 20	< 50

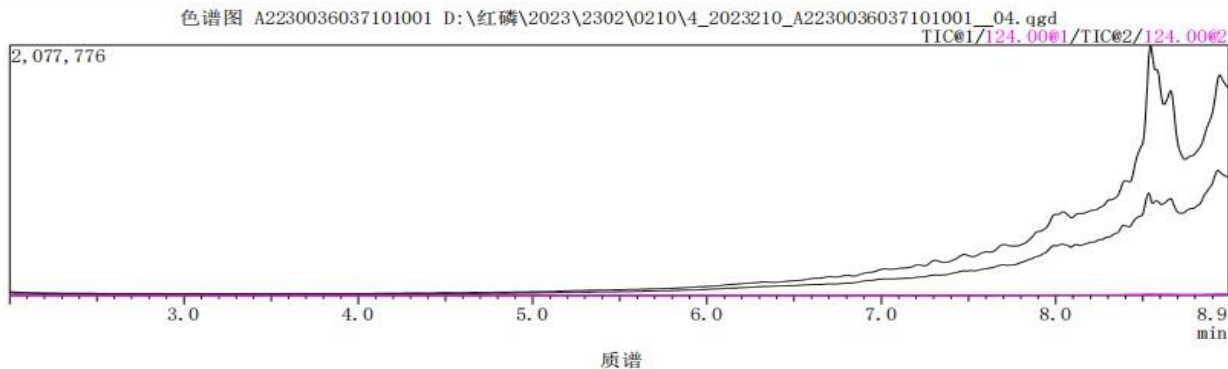
** Definition “short-term repetitive contact” taken from REACH Annex XVII entry 50 amendment (REGULATION (EU) No.1272/2013)

Test Report

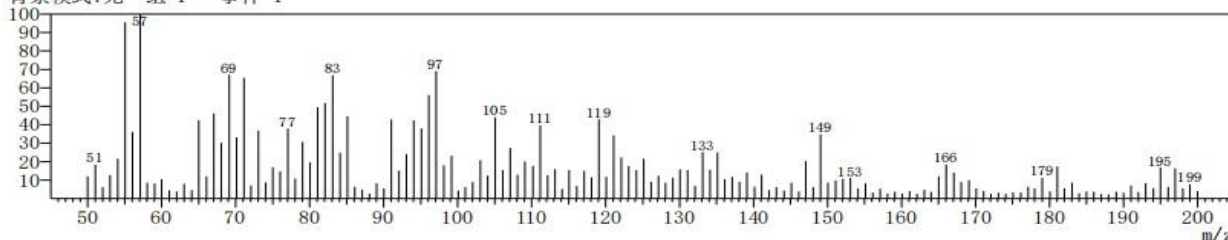
Report No. A2230036037101

Page 17 of 27

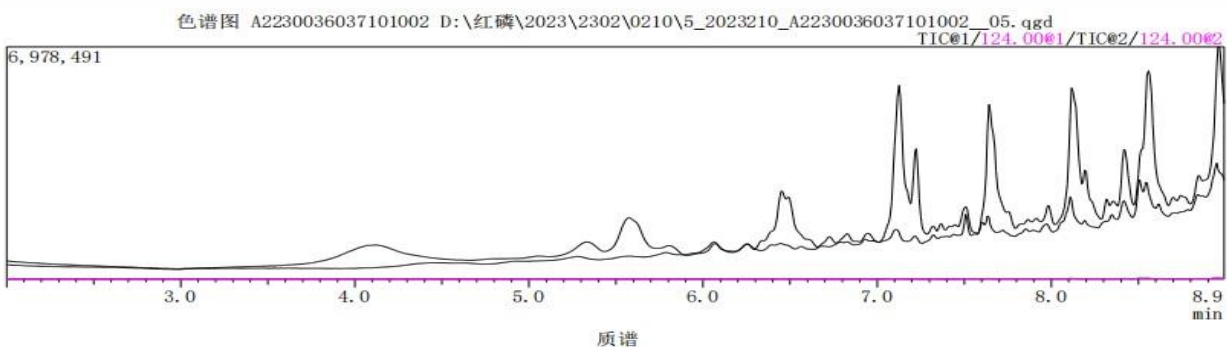
001 Red phosphorus Sample Test Spectra



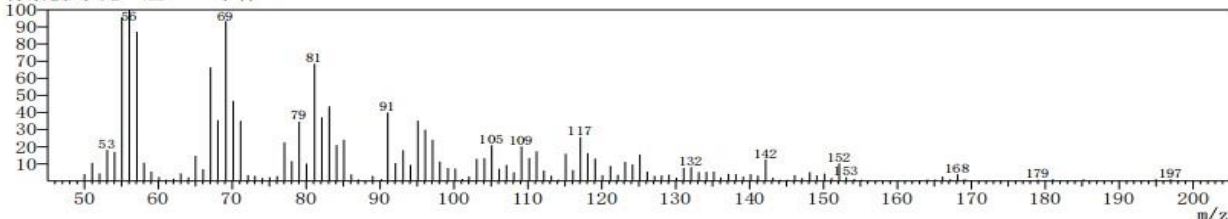
ID#:1 保留时间: N. D. (W/B) (扫描数:1019)
质量峰:151
原始模式:单个 6.242(1019)
背景模式:无 组 1 - 事件 1



002 Red phosphorus Sample Test Spectra



ID#:1 保留时间: N. D. (W/B) (扫描数:1019)
质量峰:150
原始模式:单个 6.242(1019)
背景模式:无 组 1 - 事件 1



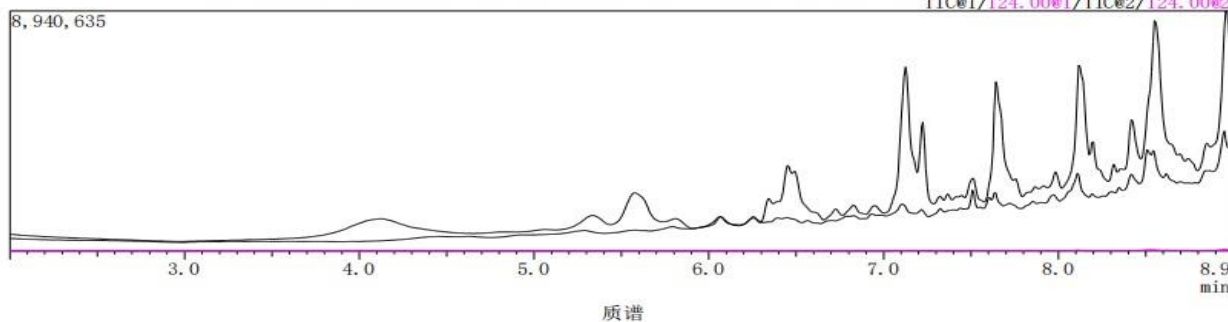
Test Report

Report No. A2230036037101

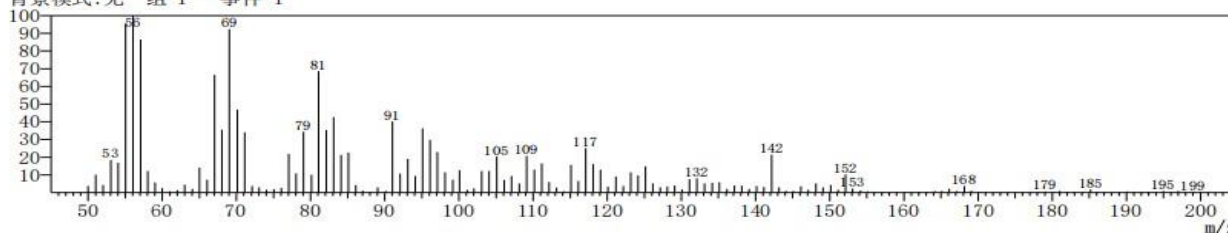
Page 18 of 27

003 Red phosphorus Sample Test Spectra

色谱图 A2230036037101003 D:\红磷\2023\2302\0210\6_2023210_A2230036037101003_06.qgd

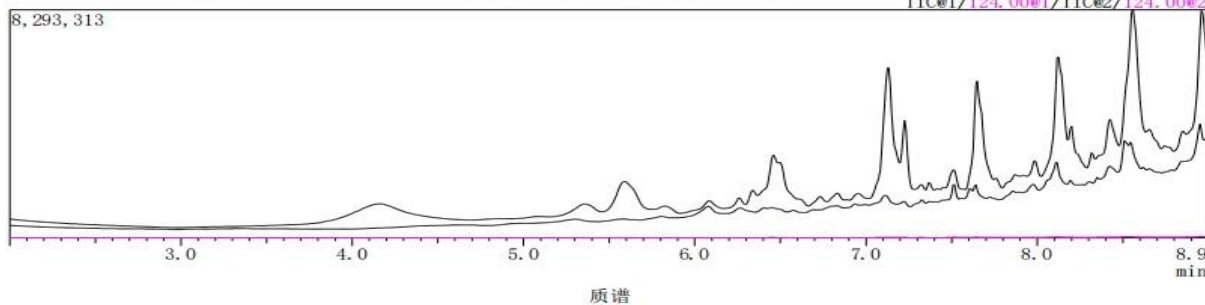


ID#:1 保留时间: N.D. (W/B) (扫描数:1019)
质量峰:150
原始模式:单个 6.242(1019)
背景模式:无 组 1 - 事件 1

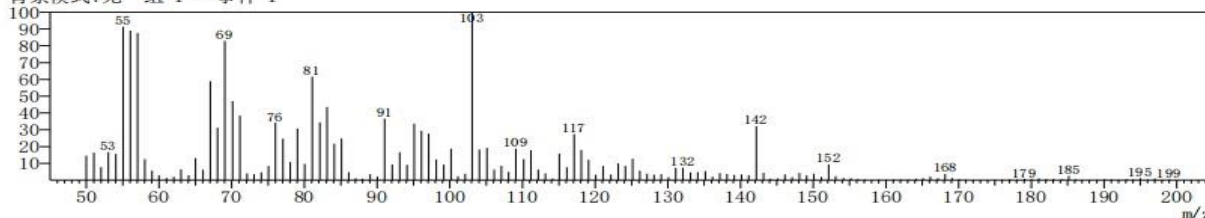


004 Red phosphorus Sample Test Spectra

色谱图 A2230036037101004 D:\红磷\2023\2302\0210\7_2023210_A2230036037101004_07.qgd



ID#:1 保留时间: N.D. (W/B) (扫描数:1019)
质量峰:151
原始模式:单个 6.242(1019)
背景模式:无 组 1 - 事件 1

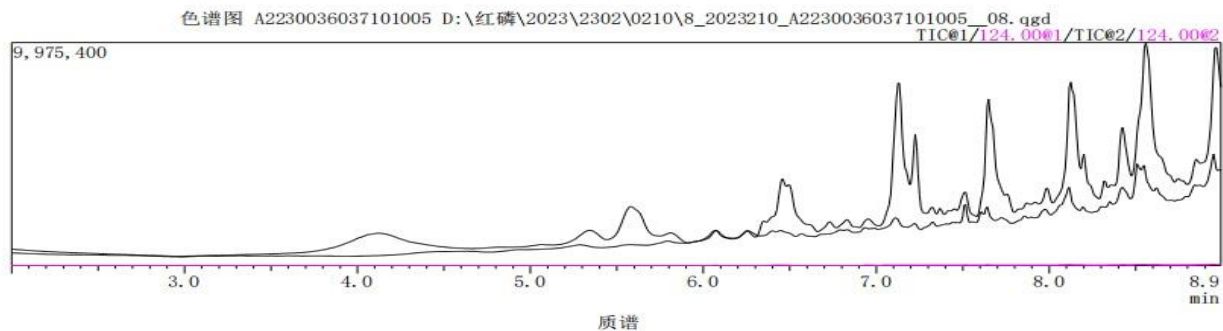


Test Report

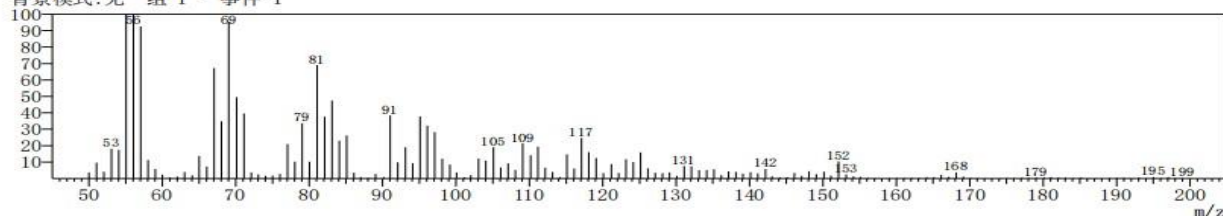
Report No. A2230036037101

Page 19 of 27

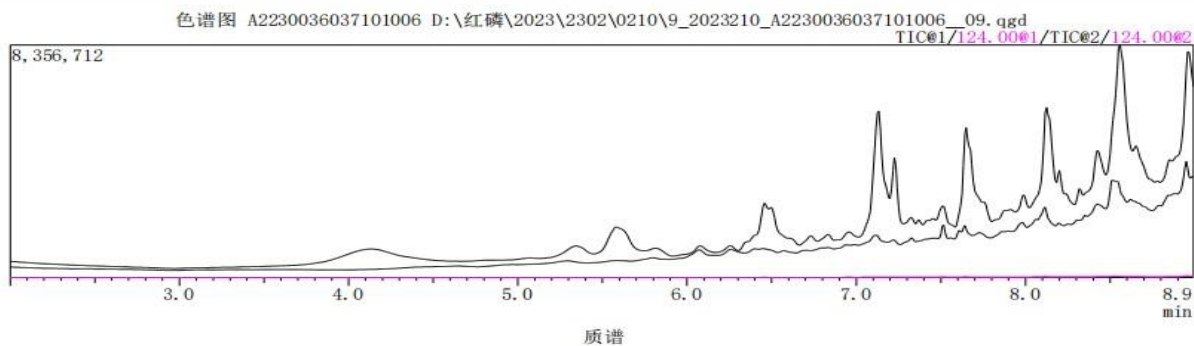
005 Red phosphorus Sample Test Spectra



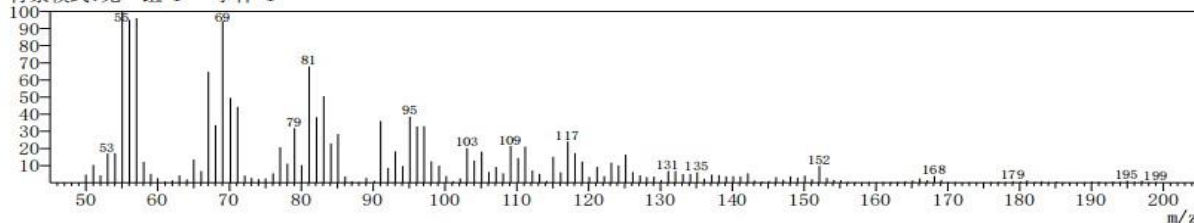
ID#: 1 保留时间: N. D. (W/B) (扫描数: 1019)
质量峰: 150
原始模式: 单个 6.242 (1019)
背景模式: 无 组 1 - 事件 1



006 Red phosphorus Sample Test Spectra



ID#: 1 保留时间: N. D. (W/B) (扫描数: 1019)
质量峰: 151
原始模式: 单个 6.242 (1019)
背景模式: 无 组 1 - 事件 1

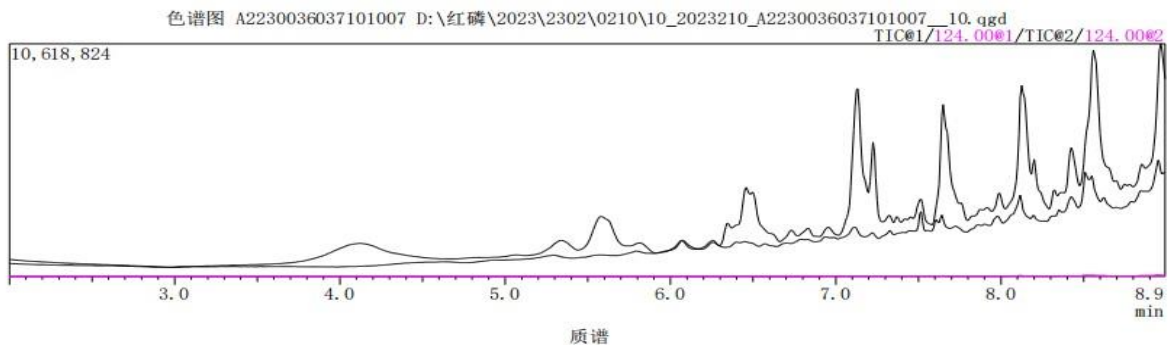


Test Report

Report No. A2230036037101

Page 20 of 27

007 Red phosphorus Sample Test Spectra

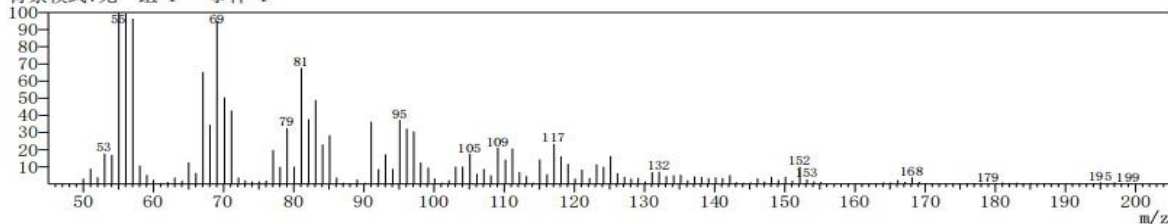


ID#:1 保留时间: N.D. (W/B) (扫描数:1019)

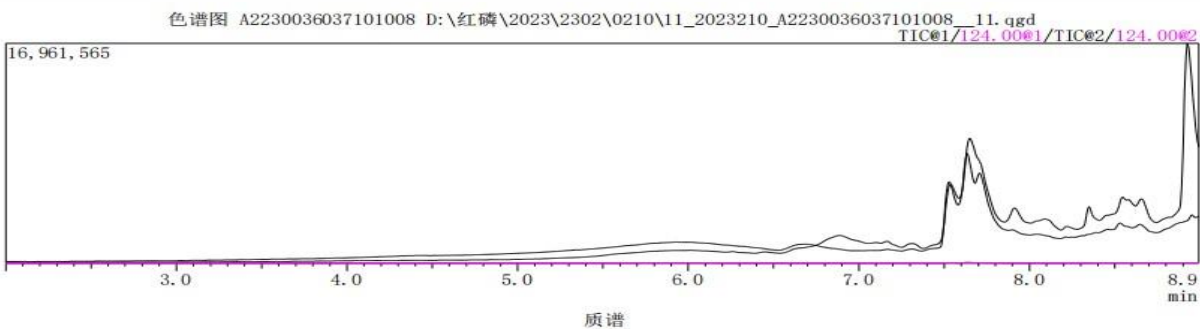
质量峰:151

原始模式:单个 6.242(1019)

背景模式:无 组 1 - 事件 1



008 Red phosphorus Sample Test Spectra

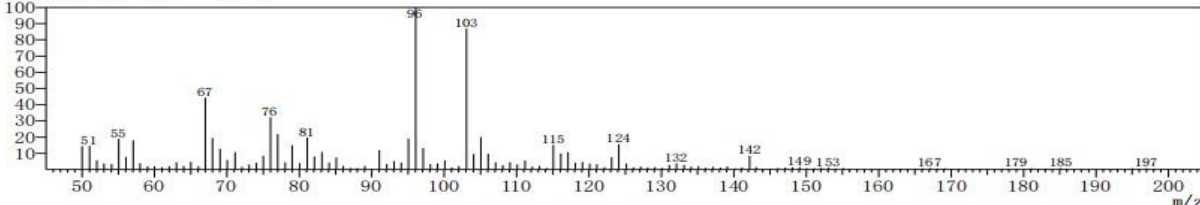


ID#:1 保留时间: N.D. (W/B) (扫描数:1019)

质量峰:151

原始模式:单个 6.242(1019)

背景模式:无 组 1 - 事件 1

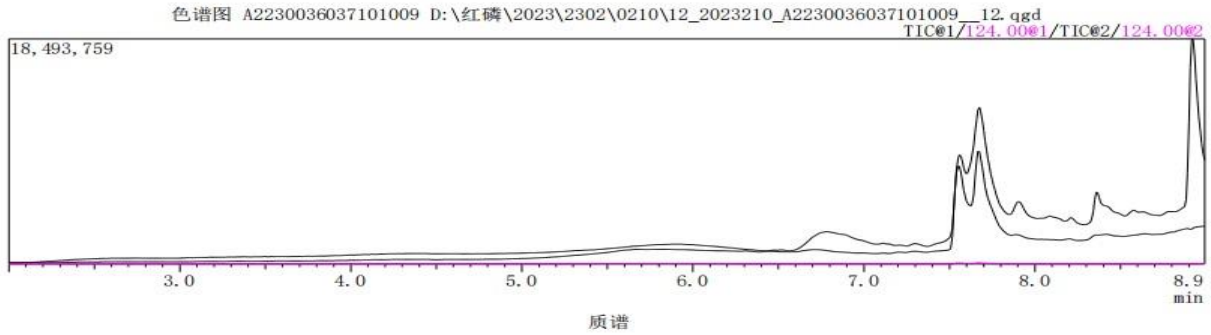


Test Report

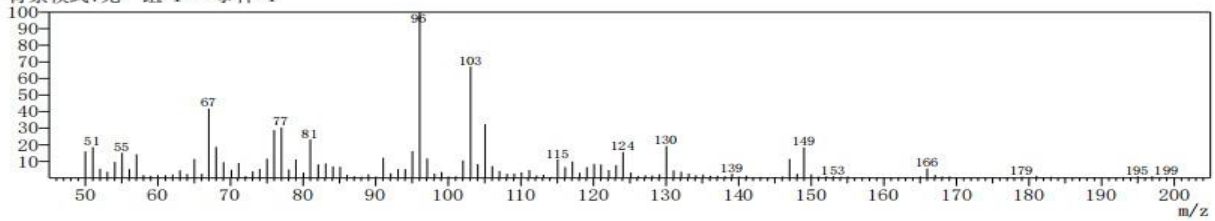
Report No. A2230036037101

Page 21 of 27

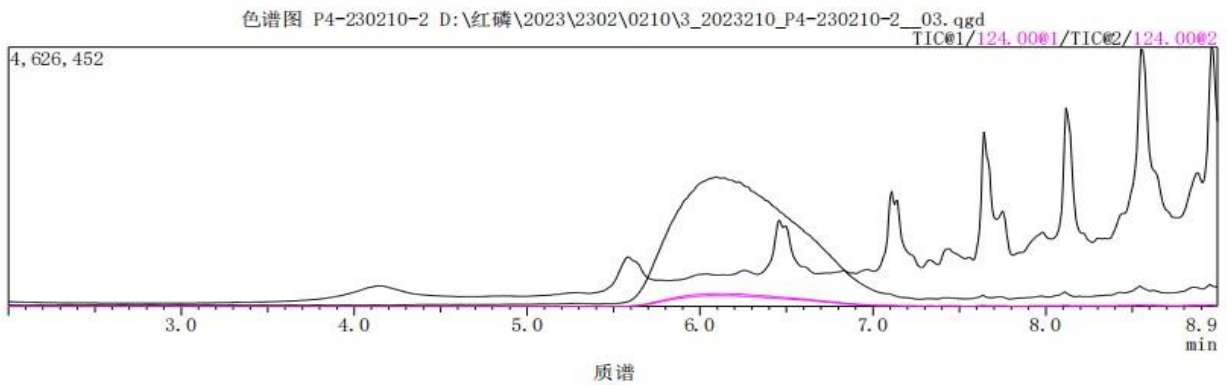
009 Red phosphorus Sample Test Spectra



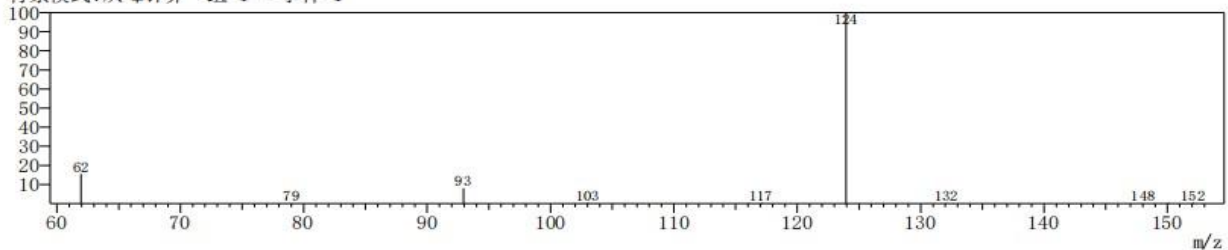
ID#:1 保留时间: N. D. (W/B) (扫描数:1019)
质量峰:151
原始模式:单个 6.242(1019)
背景模式:无 组 1 - 事件 1



Standard Material Test Spectra



ID#:1 保留时间:6.100(扫描数:985)
质量峰:11
原始模式:平均 6.092-6.108(983-987)
背景模式:从峰计算 组 1 - 事件 1



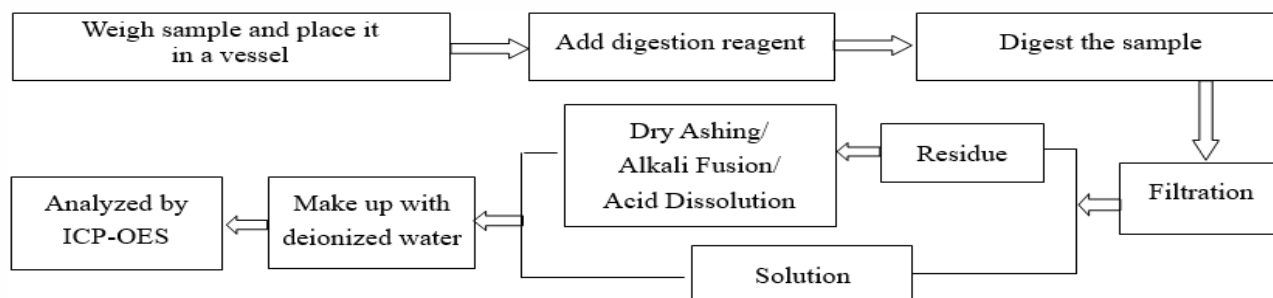
Test Report

Report No. A2230036037101

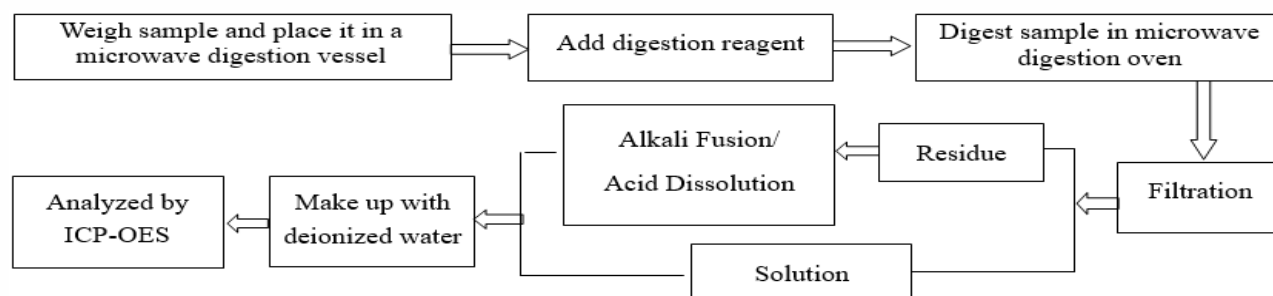
Page 22 of 27

Test Process

1. Lead (Pb), Cadmium (Cd), Chromium(Cr)

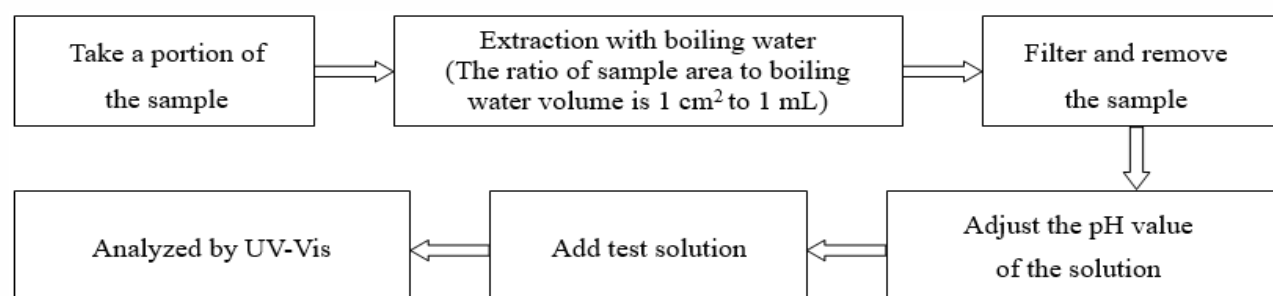


2. Mercury (Hg)

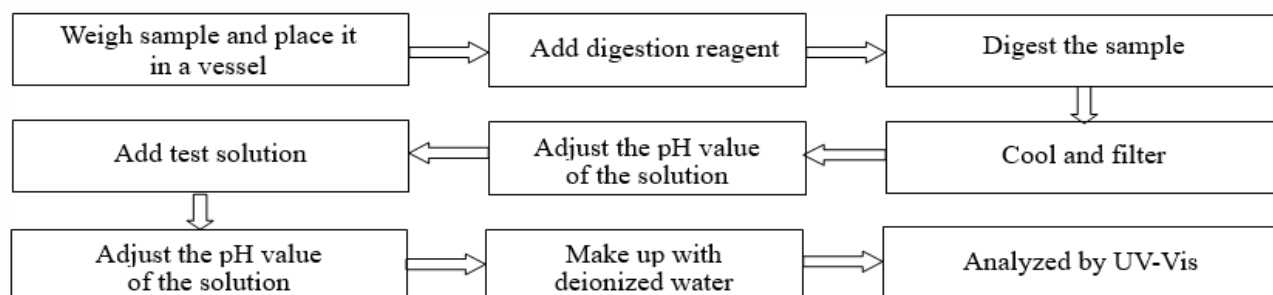


3. Hexavalent Chromium (Cr(VI))

(1) IEC 62321-7-1:2015



(2) IEC 62321-7-2:2017

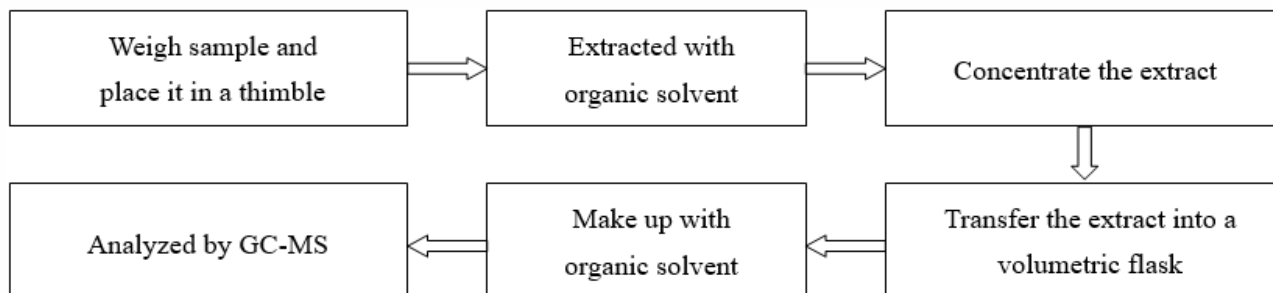


Test Report

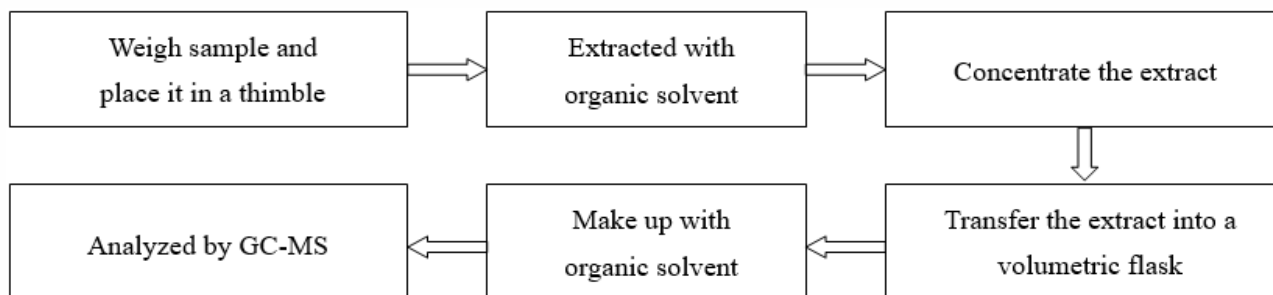
Report No. A2230036037101

Page 23 of 27

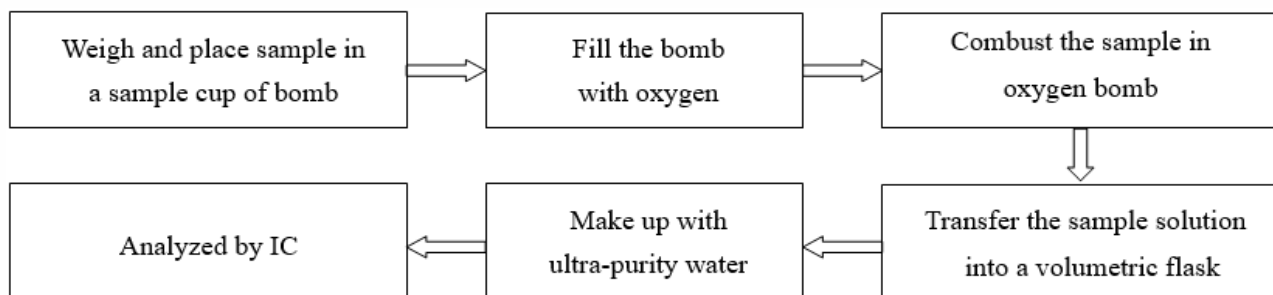
4. Polybrominated Biphenyls (PBBs), Polybrominated Diphenyl Ethers (PBDEs)



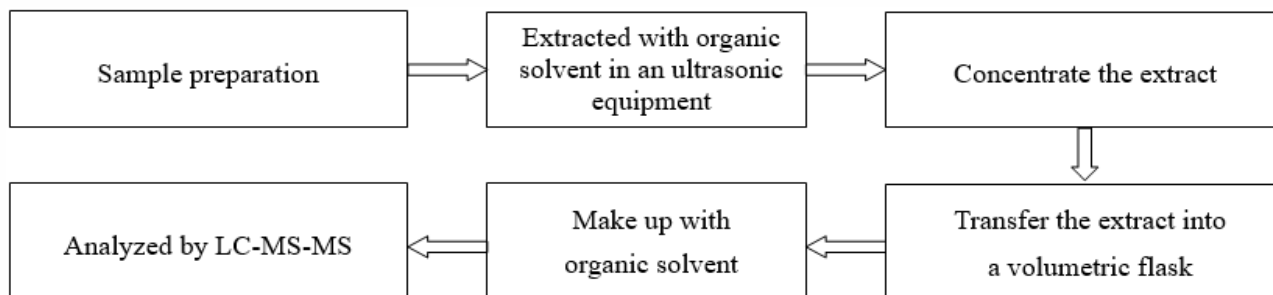
5. Phthalates (DBP, BBP, DEHP, DIBP)



6. Fluorine (F), Chlorine (Cl), Bromine (Br), Iodine (I)



7. Perfluorooctane Sulfonates(PFOS)

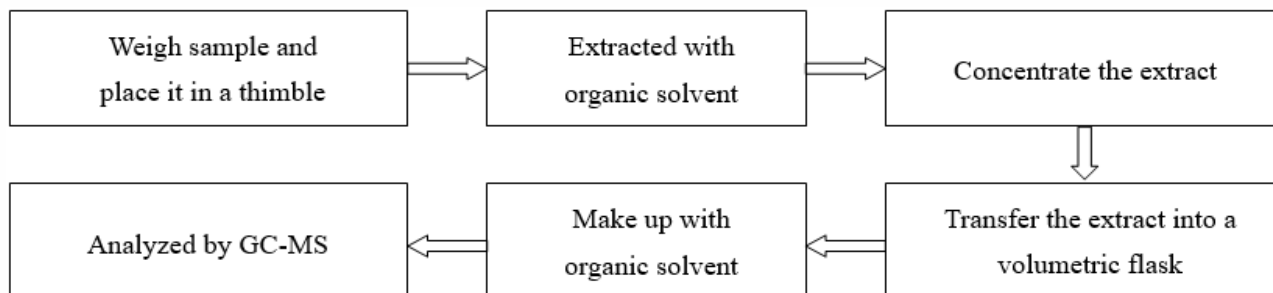


Test Report

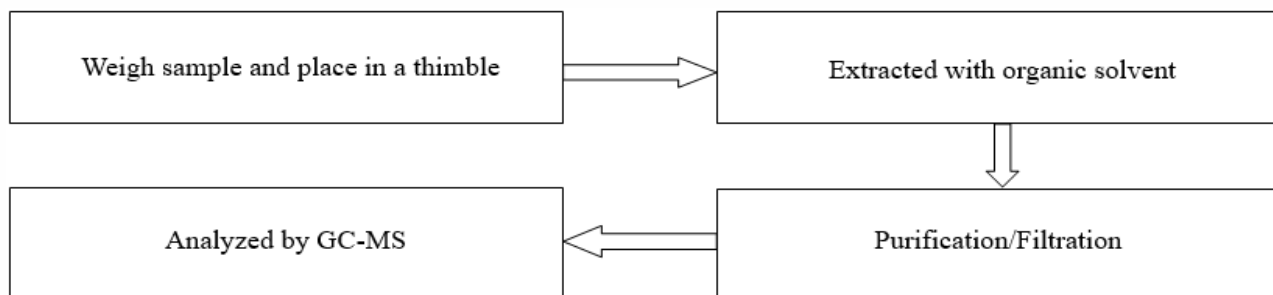
Report No. A2230036037101

Page 24 of 27

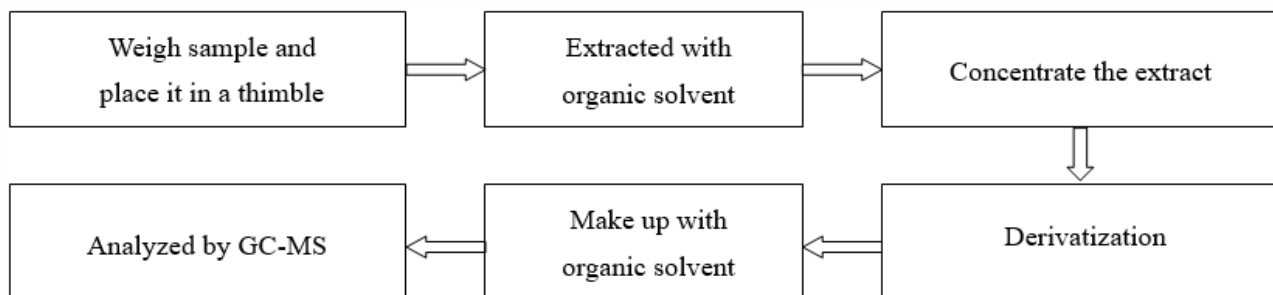
8. Phthalates



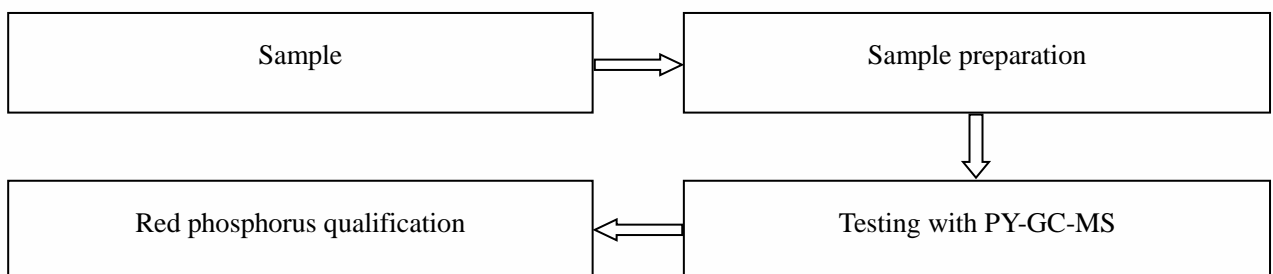
9. Polycyclic Aromatic Hydrocarbons (PAHs)



10. Tetrabromobisphenol A (TBBP-A)



11. Red phosphorus



Test Report

Report No. A2230036037101

Page 25 of 27

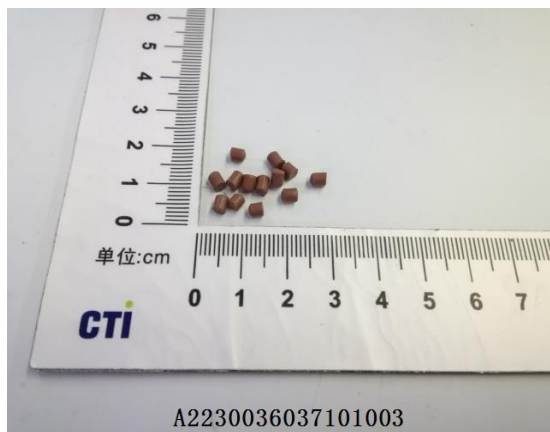
Photo(s) of the sample(s)



A2230036037101001



A2230036037101002



A2230036037101003



A2230036037101004



A2230036037101005

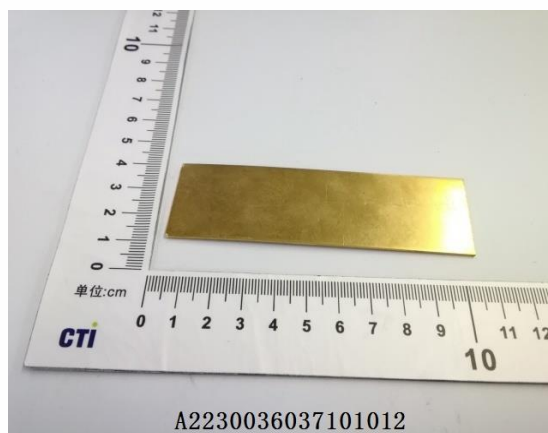


A2230036037101006

Test Report

Report No. A2230036037101

Page 26 of 27



Test Report

Report No. A2230036037101

Page 27 of 27

Statement:

1. This report is considered invalid without approved signature, special seal and the seal on the perforation;
2. The Company Name shown on Report and Address, the sample(s) and sample information was/were provided by the applicant who should be responsible for the authenticity which CTI hasn't verified;
3. The result(s) shown in this report refer(s) only to the sample(s) tested;
4. Without written approval of CTI, this report can't be reproduced except in full;
5. In case of any discrepancy between the English version and Chinese version of the testing reports (if generated), the Chinese version shall prevail.

*** End of Report ***

Appendix

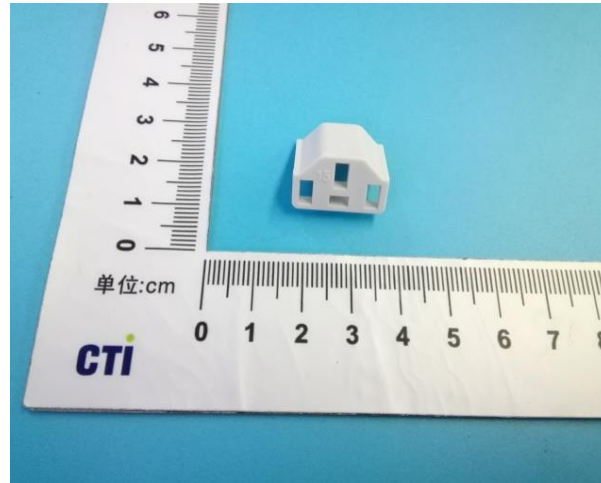
Client Reference Information

交流插頭 / AC POWER CORD

YP-01	YP-16	YP-55	YP-96L	--	--	--	YC-04	YC-13G	YC-52
YP-12L-10	YP-16L	YP-56	YP-97L	--	--	--	YC-05	YC-13L	YC-52A
YP-12L-11	YP-16H	YP-58	YP-98L	--	--	--	YC-05-1	YC-13LG	YC-53
YP-06	YP-16HL	YP-58N	YP-99L	--	--	--	YC-05A	YC-14	YC-54
YP-07	YP-16C	YP-61A	YP-103L	--	--	--	YC-05B	YC-14G	YC-55
YP-08	YP-17	YP-62	YL-915	--	--	--	YC-05C	YC-14L	YC-55A
YP-09	YP-17L	YP-64	YL-921B	--	--	--	YC-05E	YC-14GL	YC-56
YP-10	YP-17H	YP-65	YP-46Z	--	--	--	YC-05F	YC-15	YC-58
YP-11	YP-17HL	YP-66	YP-107	--	--	--	YC-05L	YC-15A	YC-62
YP-11A	YP-17C	YP-67	YP-108	--	--	--	YC-06	YC-16	YC-64
YP-11B	YP-18	YP-68L	YP-109	--	--	--	YC-06R	YC-17	YC-72
YP-11C	YP-18A	YP-69L	--	--	--	--	YC-07	YC-18	YC-73L
YP-11K	YP-18B	YP-72L	--	--	--	--	YC-08	YC-18L	YC-77
YP-11L	YP-18L	YP-73L	--	--	--	--	YC-11	YC-18A	YC-77A
YP-11L-9	YP-18N	YP-74L	--	--	--	--	YC-11GL	YC-18Z	YC-79
YP-11W	YP-18T	YP-75L	--	--	--	--	YC-12	YC-19	YC-79A
YP-11P	YP-18G	YP-76	--	--	--	--	YC-12A	YC-20	YC-07A
YP-11T	YP-19	YP-77	--	--	--	--	YC-12C	YC-20D1	YC-12E
YP-11R	YP-19L	YP-78	--	--	--	--	YC-12D	YC-20L	YC-18E
YP-11K	YP-19H	YP-79	--	--	--	--	YC-12G	YC-20L-1	YC-15E
YP-11F	YP-19HL	YP-82	--	--	--	--	YC-12K	YC-20LR	YC-25E
YP-12	YP-19C	YP-83	--	--	--	--	YC-12L	YC-21	YC-91L
YP-12A	YP-21Z	YP-84	--	--	--	--	YC-12LR	YC-21A	YC-92L
YP-12C	YP-22Z	YP-88L	--	--	--	--	YC-12-01	YC-21L	YC-93L
YP-12E	YP-23Z	YP-90L	--	--	--	--	YC-12GL	YC-21F	YC-75L
YP-12G	YP-24Z	YP-91L	--	--	--	--	YC-12HL	YC-25	--
YP-12L	YP-32Z	YP-92L	--	--	--	--	YC-13	YC-25L	--
YP-12L-9	YP-33Z	YP-93L	--	--	--	--	YC-13C	YC-12GLR	--
YP-12N	YP-52	YP-94L	--	--	--	--	YC-13D	YC-12G+E	--
YP-12P	YP-53	YP-95L	--	--	--	--	YC-13W	--	--
YP-12D	YP-54	YP-33A	--	--	--	--	YC-13E	--	--
YP-33	YP-32F	YP-33B	--	--	--	--	--	--	--
YP-32A	YP-33AL	--	--	--	--	--	--	--	--
YP-32L	YP-32BL	--	--	--	--	--	--	--	--
YP-31	YP-32BL	--	--	--	--	--	--	--	--

Client Reference Photo (Non-tested sample)

008



Statement:

1. The Appendix Information was/were provided by the applicant who should be responsible for the authenticity which CTI hasn't verified.
2. The Appendix Information is/are the supplement(s) for the Report A2230036037101.