



# Test Report

Report No. A223003603710101

Page 1 of 25

**Company Name** YUNG LI CO.,LTD

**shown on Report**

**Address** DA PU INDUSTRIAL ZONE,GANG ZI,CHANG PING TOWN, DONG GUAN CITY,GUANG DONG 523571 CHINA

Sample Received Date Feb. 9, 2023

Testing Period Feb. 9, 2023 to Feb. 15, 2023

**Test Requested**

As specified by client, to test Lead (Pb), Cadmium (Cd), Mercury (Hg), Hexavalent Chromium (Cr(VI)), Polybrominated Biphenyls (PBBs), Polybrominated Diphenyl Ethers (PBDEs), Phthalates (DBP, BBP, DEHP, DIBP), Fluorine (F), Chlorine (Cl), Bromine (Br), Iodine (I), Perfluorooctane Sulfonates(PFOS), Phthalates,Polycyclic Aromatic Hydrocarbons (PAHs), Tetrabromobisphenol A (TBBP-A), Red phosphorus in the submitted sample(s).

**Test Method/Test Result(s)** Please refer to the following page(s).



Approved by

*Hill Zheng*

Date

Feb. 15, 2023

Hill Zheng  
Technical Manager

No. M661471247

Centre Testing International Group Co.,Ltd.

CTI Building, Xing Dong Community, Xin'an Sub-district, Bao'an District, Shenzhen City, Guangdong Province, P.R. China

# Test Report

Report No. A223003603710101

Page 2 of 25

**The following sample(s) and sample information was/were submitted and identified by/on the behalf of the applicant**

CTI Sample ID	Sample Name(s)	Part No.	Reference Report No. - CTI Sample ID
001	cable	TPE BLACK	A2230036037101-001
002		TPE WHITE	A2230036037101-002
003		TPE BROWN	A2230036037101-003
004		TPE BLUE	A2230036037101-004
005		TPE YELLOW	A2230036037101-005
006		TPE GREEN	A2230036037101-006
007		TPE GRAY	A2230036037101-007
010		CABLE COPPER	A2230036037101-010

**Remark:**

The samples with the reference information in the table above are non-tested in this report. Test results and the photos of the " CTI Sample ID " column reference to " Reference Report No. - CTI Sample ID " column.

# Test Report

Report No. A223003603710101

Page 3 of 25

## Test Method

Tested Item(s)	Test Method	Measured Equipment(s)
Lead (Pb)	IEC 62321-5:2013	ICP-OES
Cadmium (Cd)	IEC 62321-5:2013	ICP-OES
Mercury (Hg)	IEC 62321-4:2013+AMD1:2017 CSV	ICP-OES
Hexavalent Chromium (Cr(VI))	IEC 62321-7-1:2015	UV-Vis
	IEC 62321-7-2:2017 and/or determination of Total Chromium by IEC 62321-5:2013	UV-Vis/ICP-OES
Polybrominated Biphenyls (PBBs)	IEC 62321-6:2015	GC-MS
Polybrominated Diphenyl Ethers (PBDEs)	IEC 62321-6:2015	GC-MS
Phthalates (DBP, BBP, DEHP, DIBP)	IEC 62321-8:2017	GC-MS
Fluorine (F)	Refer to EN 14582:2016	IC
Chlorine (Cl)	Refer to EN 14582:2016	IC
Bromine (Br)	Refer to EN 14582:2016	IC
Iodine (I)	Refer to EN 14582:2016	IC
Perfluorooctane Sulfonates(PFOS)	Refer to US EPA 3550C:2007 & US EPA 8321B:2007	LC-MS-MS
Phthalates	Refer to EN 14372:2004(E)	GC-MS
Red phosphorus	Refer to GB/T 9722-2006	PY-GC-MS
Polycyclic Aromatic Hydrocarbons (PAHs)	AfPS GS 2019:01 PAK	GC-MS
Tetrabromobisphenol A (TBBP-A)	Refer to US EPA 3550C:2007 & US EPA 8270E:2018	GC-MS

# Test Report

Report No. A223003603710101

Page 4 of 25

## Test Result(s)

Tested Item(s)	Result			MDL
	001	002	003	
Lead (Pb)	N.D.	N.D.	N.D.	2 mg/kg
Cadmium (Cd)	N.D.	N.D.	N.D.	2 mg/kg
Mercury (Hg)	N.D.	N.D.	N.D.	2 mg/kg
Hexavalent Chromium (Cr(VI))	N.D.	N.D.	N.D.	8 mg/kg
	--	--	--	0.10 $\mu\text{g}/\text{cm}^2$ (LOQ)

Tested Item(s)	Result			MDL
	004	005	006	
Lead (Pb)	N.D.	N.D.	N.D.	2 mg/kg
Cadmium (Cd)	N.D.	N.D.	N.D.	2 mg/kg
Mercury (Hg)	N.D.	N.D.	N.D.	2 mg/kg
Hexavalent Chromium (Cr(VI))	N.D.	N.D.	N.D.	8 mg/kg
	--	--	--	0.10 $\mu\text{g}/\text{cm}^2$ (LOQ)

Tested Item(s)	Result		MDL
	007	010	
Lead (Pb)	N.D.	N.D.	2 mg/kg
Cadmium (Cd)	N.D.	N.D.	2 mg/kg
Mercury (Hg)	N.D.	N.D.	2 mg/kg
Hexavalent Chromium (Cr(VI))	N.D.	--	8 mg/kg
	--	N.D.▼	0.10 $\mu\text{g}/\text{cm}^2$ (LOQ)

# Test Report

Report No. A223003603710101

Page 5 of 25

Tested Item(s)	Result			MDL
	001	002	003	
<b>Polybrominated Biphenyls (PBBs)</b>				
Monobromobiphenyl	N.D.	N.D.	N.D.	5 mg/kg
Dibromobiphenyl	N.D.	N.D.	N.D.	5 mg/kg
Tribromobiphenyl	N.D.	N.D.	N.D.	5 mg/kg
Tetrabromobiphenyl	N.D.	N.D.	N.D.	5 mg/kg
Pentabromobiphenyl	N.D.	N.D.	N.D.	5 mg/kg
Hexabromobiphenyl	N.D.	N.D.	N.D.	5 mg/kg
Heptabromobiphenyl	N.D.	N.D.	N.D.	5 mg/kg
Octabromobiphenyl	N.D.	N.D.	N.D.	5 mg/kg
Nonabromobiphenyl	N.D.	N.D.	N.D.	5 mg/kg
Decabromobiphenyl	N.D.	N.D.	N.D.	5 mg/kg

Tested Item(s)	Result			MDL
	004	005	006	
<b>Polybrominated Biphenyls (PBBs)</b>				
Monobromobiphenyl	N.D.	N.D.	N.D.	5 mg/kg
Dibromobiphenyl	N.D.	N.D.	N.D.	5 mg/kg
Tribromobiphenyl	N.D.	N.D.	N.D.	5 mg/kg
Tetrabromobiphenyl	N.D.	N.D.	N.D.	5 mg/kg
Pentabromobiphenyl	N.D.	N.D.	N.D.	5 mg/kg
Hexabromobiphenyl	N.D.	N.D.	N.D.	5 mg/kg
Heptabromobiphenyl	N.D.	N.D.	N.D.	5 mg/kg
Octabromobiphenyl	N.D.	N.D.	N.D.	5 mg/kg
Nonabromobiphenyl	N.D.	N.D.	N.D.	5 mg/kg
Decabromobiphenyl	N.D.	N.D.	N.D.	5 mg/kg

# Test Report

Report No. A223003603710101

Page 6 of 25

Tested Item(s)	Result		MDL
	007		
<b>Polybrominated Biphenyls (PBBs)</b>			
Monobromobiphenyl	N.D.		5 mg/kg
Dibromobiphenyl	N.D.		5 mg/kg
Tribromobiphenyl	N.D.		5 mg/kg
Tetrabromobiphenyl	N.D.		5 mg/kg
Pentabromobiphenyl	N.D.		5 mg/kg
Hexabromobiphenyl	N.D.		5 mg/kg
Heptabromobiphenyl	N.D.		5 mg/kg
Octabromobiphenyl	N.D.		5 mg/kg
Nonabromobiphenyl	N.D.		5 mg/kg
Decabromobiphenyl	N.D.		5 mg/kg

Tested Item(s)	Result			MDL
	001	002	003	
<b>Polybrominated Diphenyl Ethers (PBDEs)</b>				
Monobromodiphenyl ether	N.D.	N.D.	N.D.	5 mg/kg
Dibromodiphenyl ether	N.D.	N.D.	N.D.	5 mg/kg
Tribromodiphenyl ether	N.D.	N.D.	N.D.	5 mg/kg
Tetrabromodiphenyl ether	N.D.	N.D.	N.D.	5 mg/kg
Pentabromodiphenyl ether	N.D.	N.D.	N.D.	5 mg/kg
Hexabromodiphenyl ether	N.D.	N.D.	N.D.	5 mg/kg
Heptabromodiphenyl ether	N.D.	N.D.	N.D.	5 mg/kg
Octabromodiphenyl ether	N.D.	N.D.	N.D.	5 mg/kg
Nonabromodiphenyl ether	N.D.	N.D.	N.D.	5 mg/kg
Decabromodiphenyl ether	N.D.	N.D.	N.D.	5 mg/kg

# Test Report

Report No. A223003603710101

Page 7 of 25

Tested Item(s)	Result			MDL
	004	005	006	
<b>Polybrominated Diphenyl Ethers (PBDEs)</b>				
Monobromodiphenyl ether	N.D.	N.D.	N.D.	5 mg/kg
Dibromodiphenyl ether	N.D.	N.D.	N.D.	5 mg/kg
Tribromodiphenyl ether	N.D.	N.D.	N.D.	5 mg/kg
Tetrabromodiphenyl ether	N.D.	N.D.	N.D.	5 mg/kg
Pentabromodiphenyl ether	N.D.	N.D.	N.D.	5 mg/kg
Hexabromodiphenyl ether	N.D.	N.D.	N.D.	5 mg/kg
Heptabromodiphenyl ether	N.D.	N.D.	N.D.	5 mg/kg
Octabromodiphenyl ether	N.D.	N.D.	N.D.	5 mg/kg
Nonabromodiphenyl ether	N.D.	N.D.	N.D.	5 mg/kg
Decabromodiphenyl ether	N.D.	N.D.	N.D.	5 mg/kg

Tested Item(s)	Result	MDL
	007	
<b>Polybrominated Diphenyl Ethers (PBDEs)</b>		
Monobromodiphenyl ether	N.D.	5 mg/kg
Dibromodiphenyl ether	N.D.	5 mg/kg
Tribromodiphenyl ether	N.D.	5 mg/kg
Tetrabromodiphenyl ether	N.D.	5 mg/kg
Pentabromodiphenyl ether	N.D.	5 mg/kg
Hexabromodiphenyl ether	N.D.	5 mg/kg
Heptabromodiphenyl ether	N.D.	5 mg/kg
Octabromodiphenyl ether	N.D.	5 mg/kg
Nonabromodiphenyl ether	N.D.	5 mg/kg
Decabromodiphenyl ether	N.D.	5 mg/kg

# Test Report

Report No. A223003603710101

Page 8 of 25

Tested Item(s)	Result			MDL
	001	002	003	
<b>Phthalates (DBP, BBP, DEHP, DIBP)</b>				
Dibutyl phthalate (DBP) CAS#:84-74-2	N.D.	N.D.	N.D.	50 mg/kg
Butyl benzyl phthalate (BBP) CAS#:85-68-7	N.D.	N.D.	N.D.	50 mg/kg
Di-(2-ethylhexyl) phthalate (DEHP) CAS#:117-81-7	N.D.	N.D.	N.D.	50 mg/kg
Diisobutyl phthalate (DIBP) CAS#:84-69-5	N.D.	N.D.	N.D.	50 mg/kg

Tested Item(s)	Result			MDL
	004	005	006	
<b>Phthalates (DBP, BBP, DEHP, DIBP)</b>				
Dibutyl phthalate (DBP) CAS#:84-74-2	N.D.	N.D.	N.D.	50 mg/kg
Butyl benzyl phthalate (BBP) CAS#:85-68-7	N.D.	N.D.	N.D.	50 mg/kg
Di-(2-ethylhexyl) phthalate (DEHP) CAS#:117-81-7	N.D.	N.D.	N.D.	50 mg/kg
Diisobutyl phthalate (DIBP) CAS#:84-69-5	N.D.	N.D.	N.D.	50 mg/kg

Tested Item(s)	Result	MDL
	007	
<b>Phthalates (DBP, BBP, DEHP, DIBP)</b>		
Dibutyl phthalate (DBP) CAS#:84-74-2	N.D.	50 mg/kg
Butyl benzyl phthalate (BBP) CAS#:85-68-7	N.D.	50 mg/kg
Di-(2-ethylhexyl) phthalate (DEHP) CAS#:117-81-7	N.D.	50 mg/kg
Diisobutyl phthalate (DIBP) CAS#:84-69-5	N.D.	50 mg/kg



# Test Report

Report No. A223003603710101

Page 9 of 25

Tested Item(s)	Result			MDL
	001	002	003	
Fluorine (F)	N.D.	N.D.	N.D.	10 mg/kg
Chlorine (Cl)	178 mg/kg	177 mg/kg	185 mg/kg	10 mg/kg
Bromine (Br)	N.D.	N.D.	N.D.	10 mg/kg
Iodine (I)	N.D.	N.D.	N.D.	10 mg/kg

Tested Item(s)	Result			MDL
	004	005	006	
Fluorine (F)	N.D.	N.D.	N.D.	10 mg/kg
Chlorine (Cl)	188 mg/kg	167 mg/kg	185 mg/kg	10 mg/kg
Bromine (Br)	N.D.	N.D.	N.D.	10 mg/kg
Iodine (I)	N.D.	N.D.	N.D.	10 mg/kg

Tested Item(s)	Result	MDL
	007	
Fluorine (F)	N.D.	10 mg/kg
Chlorine (Cl)	187 mg/kg	10 mg/kg
Bromine (Br)	N.D.	10 mg/kg
Iodine (I)	N.D.	10 mg/kg

Tested Item(s)	Result			MDL
	001	002	003	
Perfluorooctane Sulfonates (PFOS)	N.D.	N.D.	N.D.	0.010 mg/kg

Tested Item(s)	Result			MDL
	004	005	006	
Perfluorooctane Sulfonates (PFOS)	N.D.	N.D.	N.D.	0.010 mg/kg

Tested Item(s)	Result	MDL
	007	
Perfluorooctane Sulfonates (PFOS)	N.D.	0.010 mg/kg

# Test Report

Report No. A223003603710101

Page 10 of 25

Tested Item(s)	Result			MDL
	001	002	003	
<b>Phthalates</b>				
Dibutyl phthalate (DBP) CAS#:84-74-2	N.D.	N.D.	N.D.	30 mg/kg
Butyl benzyl phthalate (BBP) CAS#:85-68-7	N.D.	N.D.	N.D.	30 mg/kg
Di-(2-ethylhexyl) phthalate (DEHP) CAS#:117-81-7	N.D.	N.D.	N.D.	30 mg/kg
Di-n-octyl phthalate (DNOP) CAS#:117-84-0	N.D.	N.D.	N.D.	30 mg/kg
Di-isononyl phthalate (DINP) CAS#:28553-12-0,68515-48-0	N.D.	N.D.	N.D.	50 mg/kg
Di-iso-decyl phthalate (DIDP) CAS#:26761-40-0,68515-49-1	N.D.	N.D.	N.D.	50 mg/kg
Dimethyl phthalate (DMP) CAS#:131-11-3	N.D.	N.D.	N.D.	30 mg/kg
Diethyl phthalate (DEP) CAS#:84-66-2	N.D.	N.D.	N.D.	30 mg/kg
Dipropyl phthalate (DPrP) CAS#:131-16-8	N.D.	N.D.	N.D.	30 mg/kg
Diisobutyl phthalate (DIBP) CAS#:84-69-5	N.D.	N.D.	N.D.	30 mg/kg
Dipentyl phthalate (DPP/DPENP) CAS#:131-18-0	N.D.	N.D.	N.D.	30 mg/kg
Diheptyl phthalate (DHP) CAS#:3648-21-3	N.D.	N.D.	N.D.	30 mg/kg
Dicyclohexyl phthalate (DCHP) CAS#:84-61-7	N.D.	N.D.	N.D.	30 mg/kg
Diisooctyl phthalate (DIOP) CAS#:27554-26-3	N.D.	N.D.	N.D.	50 mg/kg
Dinonyl phthalate (DNP) CAS#:84-76-4	N.D.	N.D.	N.D.	30 mg/kg
Diisononyl adipate (DINA) CAS#:33703-08-1	N.D.	N.D.	N.D.	50 mg/kg

# Test Report

Report No. A223003603710101

Page 11 of 25

Tested Item(s)	Result			MDL
	004	005	006	
<b>Phthalates</b>				
Dibutyl phthalate (DBP) CAS#:84-74-2	N.D.	N.D.	N.D.	30 mg/kg
Butyl benzyl phthalate (BBP) CAS#:85-68-7	N.D.	N.D.	N.D.	30 mg/kg
Di-(2-ethylhexyl) phthalate (DEHP) CAS#:117-81-7	N.D.	N.D.	N.D.	30 mg/kg
Di-n-octyl phthalate (DNOP) CAS#:117-84-0	N.D.	N.D.	N.D.	30 mg/kg
Di-isononyl phthalate (DINP) CAS#:28553-12-0,68515-48-0	N.D.	N.D.	N.D.	50 mg/kg
Di-iso-decyl phthalate (DIDP) CAS#:26761-40-0,68515-49-1	N.D.	N.D.	N.D.	50 mg/kg
Dimethyl phthalate (DMP) CAS#:131-11-3	N.D.	N.D.	N.D.	30 mg/kg
Diethyl phthalate (DEP) CAS#:84-66-2	N.D.	N.D.	N.D.	30 mg/kg
Dipropyl phthalate (DPrP) CAS#:131-16-8	N.D.	N.D.	N.D.	30 mg/kg
Diisobutyl phthalate (DIBP) CAS#:84-69-5	N.D.	N.D.	N.D.	30 mg/kg
Dipentyl phthalate (DPP/DPENP) CAS#:131-18-0	N.D.	N.D.	N.D.	30 mg/kg
Diheptyl phthalate (DHP) CAS#:3648-21-3	N.D.	N.D.	N.D.	30 mg/kg
Dicyclohexyl phthalate (DCHP) CAS#:84-61-7	N.D.	N.D.	N.D.	30 mg/kg
Diisooctyl phthalate (DIOP) CAS#:27554-26-3	N.D.	N.D.	N.D.	50 mg/kg
Dinonyl phthalate (DNP) CAS#:84-76-4	N.D.	N.D.	N.D.	30 mg/kg
Diisononyl adipate (DINA) CAS#:33703-08-1	N.D.	N.D.	N.D.	50 mg/kg

# Test Report

Report No. A223003603710101

Page 12 of 25

Tested Item(s)	Result	MDL
	007	
<b>Phthalates</b>		
Dibutyl phthalate (DBP) CAS#:84-74-2	N.D.	30 mg/kg
Butyl benzyl phthalate (BBP) CAS#:85-68-7	N.D.	30 mg/kg
Di-(2-ethylhexyl) phthalate (DEHP) CAS#:117-81-7	N.D.	30 mg/kg
Di-n-octyl phthalate (DNOP) CAS#:117-84-0	N.D.	30 mg/kg
Di-isononyl phthalate (DINP) CAS#:28553-12-0,68515-48-0	N.D.	50 mg/kg
Di-iso-decyl phthalate (DIDP) CAS#:26761-40-0,68515-49-1	N.D.	50 mg/kg
Dimethyl phthalate (DMP) CAS#:131-11-3	N.D.	30 mg/kg
Diethyl phthalate (DEP) CAS#:84-66-2	N.D.	30 mg/kg
Dipropyl phthalate (DPrP) CAS#:131-16-8	N.D.	30 mg/kg
Diisobutyl phthalate (DIBP) CAS#:84-69-5	N.D.	30 mg/kg
Dipentyl phthalate (DPP/DPENP) CAS#:131-18-0	N.D.	30 mg/kg
Diheptyl phthalate (DHP) CAS#:3648-21-3	N.D.	30 mg/kg
Dicyclohexyl phthalate (DCHP) CAS#:84-61-7	N.D.	30 mg/kg
Diisooctyl phthalate (DIOP) CAS#:27554-26-3	N.D.	50 mg/kg
Dinonyl phthalate (DNP) CAS#:84-76-4	N.D.	30 mg/kg
Diisononyl adipate (DINA) CAS#:33703-08-1	N.D.	50 mg/kg

# Test Report

Report No. A223003603710101

Page 13 of 25

Tested Item(s)	Result			MDL
	001	002	003	
Tetrabromobisphenol A (TBBP-A)	N.D.	N.D.	N.D.	5 mg/kg

Tested Item(s)	Result			MDL
	004	005	006	
Tetrabromobisphenol A (TBBP-A)	N.D.	N.D.	N.D.	5 mg/kg

Tested Item(s)	Result	MDL
	007	
Tetrabromobisphenol A (TBBP-A)	N.D.	5 mg/kg

Tested Item(s)	Result				MDL
	001	002	003	004	
<b>Polycyclic Aromatic Hydrocarbons (PAHs)</b>					
Naphthalene	1.2 mg/kg	1.3 mg/kg	1.2 mg/kg	1.3 mg/kg	0.2 mg/kg
Phenanthrene	N.D.	N.D.	N.D.	N.D.	0.2 mg/kg
Anthracene	N.D.	N.D.	N.D.	N.D.	0.2 mg/kg
Fluoranthene	N.D.	N.D.	N.D.	N.D.	0.2 mg/kg
Pyrene	N.D.	N.D.	N.D.	N.D.	0.2 mg/kg
Chrysene	N.D.	N.D.	N.D.	N.D.	0.2 mg/kg
Benzo(a)anthracene	N.D.	N.D.	N.D.	N.D.	0.2 mg/kg
Benzo(b)fluoranthene	N.D.	N.D.	N.D.	N.D.	0.2 mg/kg
Benzo(k)fluoranthene	N.D.	N.D.	N.D.	N.D.	0.2 mg/kg
Benzo(j)fluoranthene	N.D.	N.D.	N.D.	N.D.	0.2 mg/kg
Benzo(a)pyrene	N.D.	N.D.	N.D.	N.D.	0.2 mg/kg
Benzo(e)pyrene	N.D.	N.D.	N.D.	N.D.	0.2 mg/kg
Dibenzo(a,h)anthracene	N.D.	N.D.	N.D.	N.D.	0.2 mg/kg
Benzo(g,h,i)perylene	N.D.	N.D.	N.D.	N.D.	0.2 mg/kg
Indenol(1,2,3-cd)pyrene	N.D.	N.D.	N.D.	N.D.	0.2 mg/kg
Acenaphthene	N.D.	N.D.	N.D.	N.D.	0.2 mg/kg
Fluorene	N.D.	N.D.	N.D.	N.D.	0.2 mg/kg
Acenaphthylene	N.D.	N.D.	N.D.	N.D.	0.2 mg/kg

# Test Report

Report No. A223003603710101

Page 14 of 25

Tested Item(s)	Result			MDL
	005	006	007	
<b>Polycyclic Aromatic Hydrocarbons (PAHs)</b>				
Naphthalene	0.8 mg/kg	1.3 mg/kg	1.2 mg/kg	0.2 mg/kg
Phenanthrene	N.D.	N.D.	N.D.	0.2 mg/kg
Anthracene	N.D.	N.D.	N.D.	0.2 mg/kg
Fluoranthene	N.D.	N.D.	N.D.	0.2 mg/kg
Pyrene	N.D.	N.D.	N.D.	0.2 mg/kg
Chrysene	N.D.	N.D.	N.D.	0.2 mg/kg
Benzo(a)anthracene	N.D.	N.D.	N.D.	0.2 mg/kg
Benzo(b)fluoranthene	N.D.	N.D.	N.D.	0.2 mg/kg
Benzo(k)fluoranthene	N.D.	N.D.	N.D.	0.2 mg/kg
Benzo(j)fluoranthene	N.D.	N.D.	N.D.	0.2 mg/kg
Benzo(a)pyrene	N.D.	N.D.	N.D.	0.2 mg/kg
Benzo(e)pyrene	N.D.	N.D.	N.D.	0.2 mg/kg
Dibenzo(a,h)anthracene	N.D.	N.D.	N.D.	0.2 mg/kg
Benzo(g,h,i)perylene	N.D.	N.D.	N.D.	0.2 mg/kg
Indenol(1,2,3-cd)pyrene	N.D.	N.D.	N.D.	0.2 mg/kg
Acenaphthene	N.D.	N.D.	N.D.	0.2 mg/kg
Fluorene	N.D.	N.D.	N.D.	0.2 mg/kg
Acenaphthylene	N.D.	N.D.	N.D.	0.2 mg/kg

Tested Item(s)	Result			MDL
	001	002	003	
Red phosphorus	Negative*	Negative*	Negative*	500 mg/kg

Tested Item(s)	Result			MDL
	004	005	006	
Red phosphorus	Negative*	Negative*	Negative*	500 mg/kg

Tested Item(s)	Result	MDL
	007	
Red phosphorus	Negative*	500 mg/kg

# Test Report

Report No. A223003603710101

Page 15 of 25

**Sample/Part Description**

No.	CTI Sample ID	Description
1	001	Black plastic grains
2	002	White plastic grains
3	003	Brown plastic grains
4	004	Blue plastic grains
5	005	Yellow plastic grains
6	006	Green plastic grains
7	007	Grey plastic grains
8	010	Cupreous metal

**Remark: The sample(s) had been dissolved totally tested for Lead, Cadmium, Mercury.**

-MDL = Method Detection Limit

-N.D. = Not Detected (&lt;MDL or LOQ)

-mg/kg = ppm = parts per million

-LOQ = Limit of Quantification, The LOQ of Hexavalent chromium is 0.10  $\mu\text{g}/\text{cm}^2$ -▼The sample is negative for Cr(VI) – The Cr(VI) concentration is below 0.10  $\mu\text{g}/\text{cm}^2$ . The coating is considered a non-Cr(VI) based coating.

-Negative = Not Contained

-The red phosphorus is qualified by PY-GC-MS method which detect pyrolysis products P<sub>4</sub> of red phosphorus. But there is a false positive risk by performing this method, since P<sub>4</sub> could also generate while the phosphate and organic phosphate coexist with some strong oxidizing or reductant agent in pyrolysis process.

-\*Result for reference only.

**Note: The testing data and result(s) in this report is(are) just for scientific research, education, internal quality control and product development etc.**

# Test Report

Report No. A223003603710101

Page 16 of 25

**Maximum PAHs limits (mg/kg) for the materials with relevant contact/grip and operating surfaces that are to be categorised based on the results of the risk assessment**

Parameters	Category 1	Category 2		Category 3	
	Materials intended to be placed in the mouth, or materials in toys according to Directive 2009/48/EC or materials for the use by children up to 3 years of age coming into long-term contact with skin (more than 30s) during the intended use	Materials not covered by category 1, coming into long-term contact (more than 30s) or short-term repetitive contact** with skin during the intended or foreseeable use	Use by children (< 14 years) (include both active and passive direct contact)	Other consumer products	Use by children (< 14 years) (include both active and passive direct contact)
Benzo(a)pyrene	< 0.2	< 0.2	< 0.5	< 0.5	< 1
Benzo(e)pyrene	< 0.2	< 0.2	< 0.5	< 0.5	< 1
Benzo(a)anthracene	< 0.2	< 0.2	< 0.5	< 0.5	< 1
Benzo(b)fluoranthene	< 0.2	< 0.2	< 0.5	< 0.5	< 1
Benzo(j)fluoranthene	< 0.2	< 0.2	< 0.5	< 0.5	< 1
Benzo(k)fluoranthene	< 0.2	< 0.2	< 0.5	< 0.5	< 1
Chrysene	< 0.2	< 0.2	< 0.5	< 0.5	< 1
Dibenz(a,h)anthracene	< 0.2	< 0.2	< 0.5	< 0.5	< 1
Benzo(g,h,i)perylene	< 0.2	< 0.2	< 0.5	< 0.5	< 1
Indenol(1,2,3-cd)pyrene	< 0.2	< 0.2	< 0.5	< 0.5	< 1
Phenanthrene, Anthracene, Fluoranthene, Pyrene	< 1 Sum	< 5 Sum	< 10 Sum	< 20 Sum	< 50 Sum
Naphthalene	< 1	< 2		< 10	
Sum 15 PAHs	< 1	< 5	< 10	< 20	< 50

\*\* Definition “short-term repetitive contact” taken from REACH Annex XVII entry 50 amendment (REGULATION (EU) No.1272/2013)

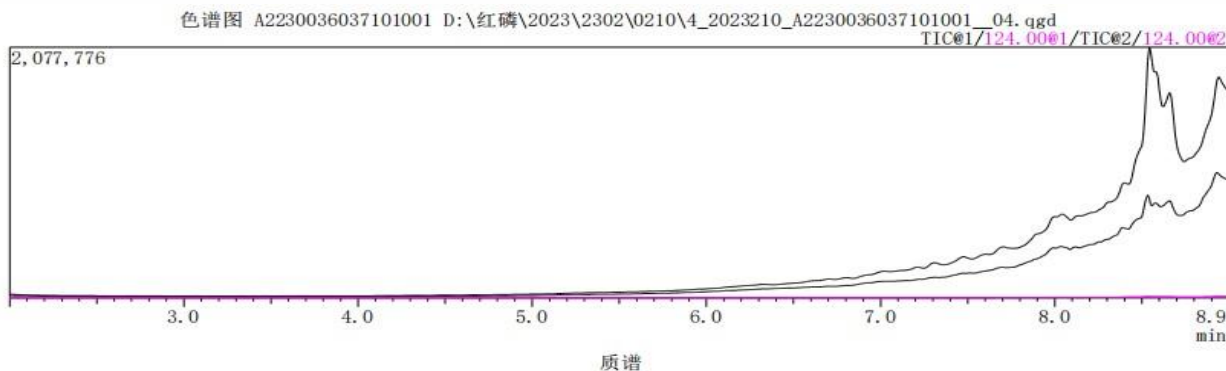


# Test Report

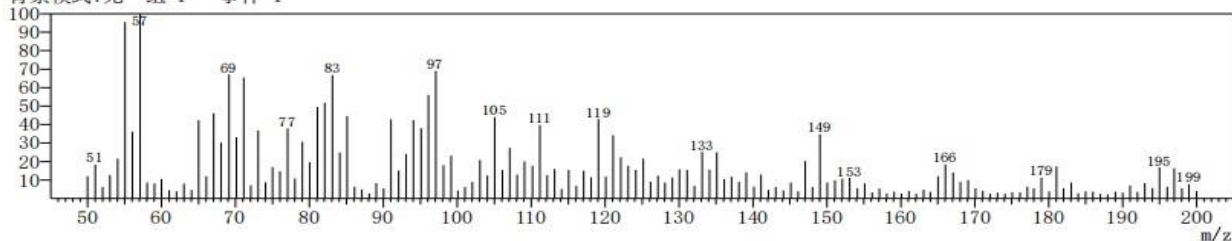
Report No. A223003603710101

Page 17 of 25

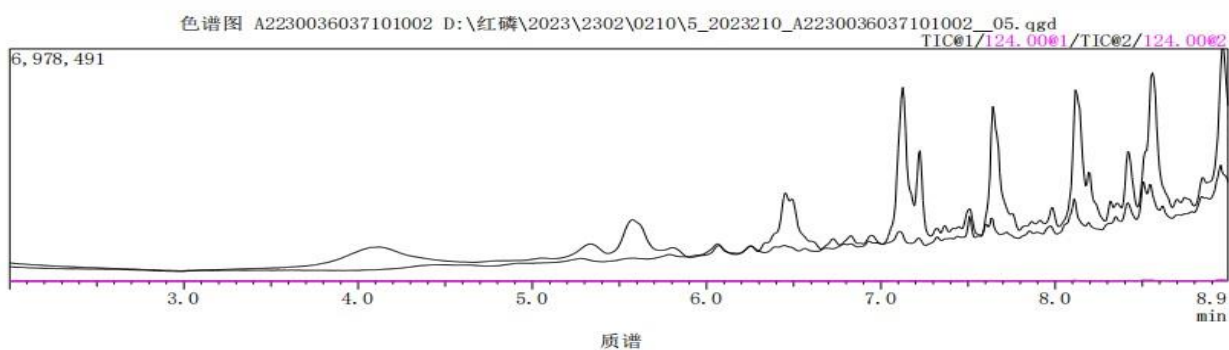
## 001 Red phosphorus Sample Test Spectra



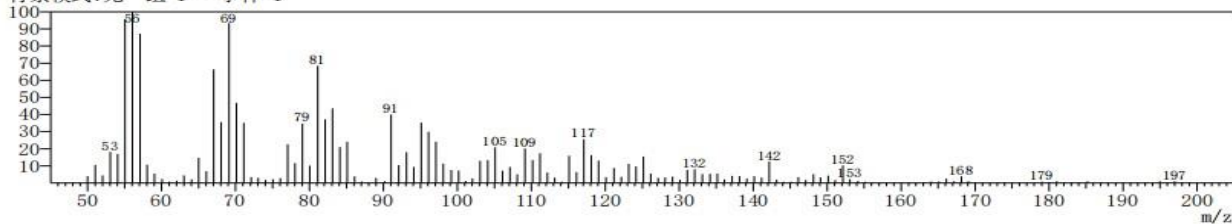
ID#:1 保留时间: N.D. (W/B) (扫描数:1019)  
质量峰:151  
原始模式:单个 6.242(1019)  
背景模式:无 组 1 - 事件 1



## 002 Red phosphorus Sample Test Spectra



ID#:1 保留时间: N.D. (W/B) (扫描数:1019)  
质量峰:150  
原始模式:单个 6.242(1019)  
背景模式:无 组 1 - 事件 1

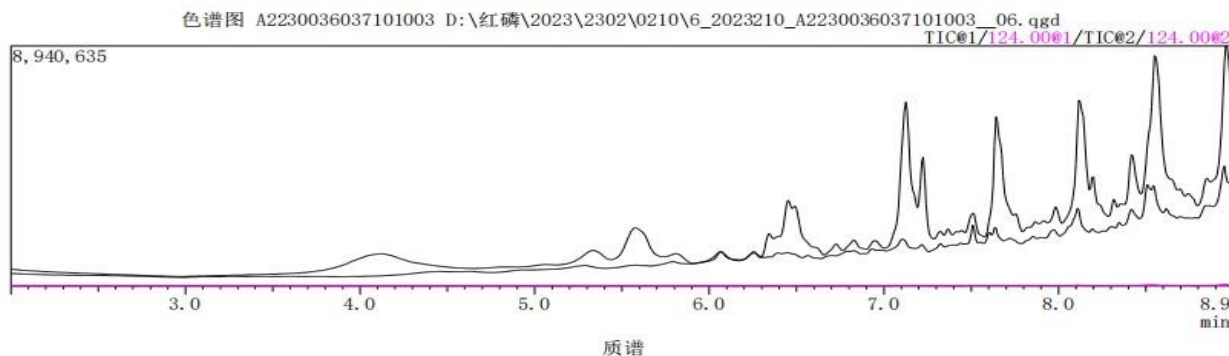


# Test Report

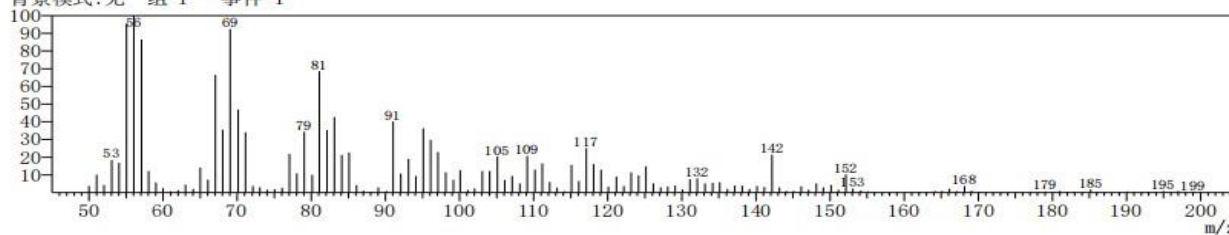
Report No. A223003603710101

Page 18 of 25

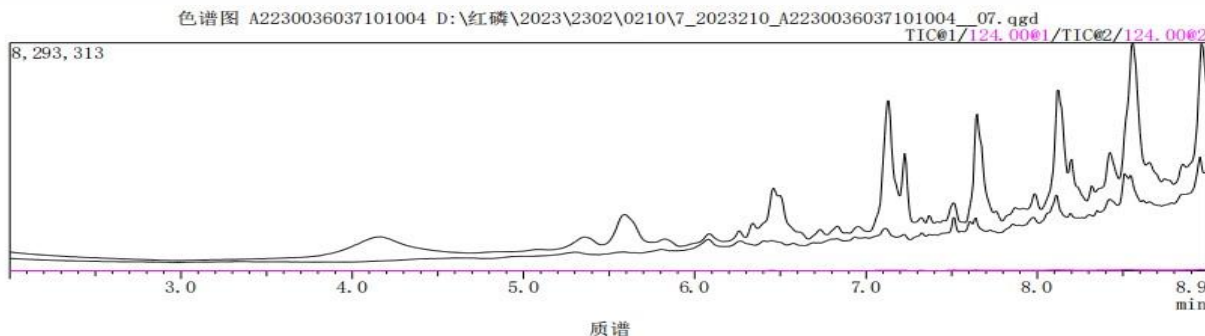
## 003 Red phosphorus Sample Test Spectra



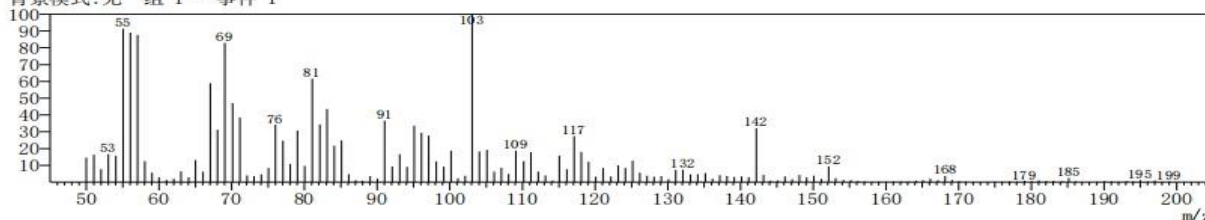
ID#:1 保留时间: N.D. (W/B) (扫描数:1019)  
质量峰:150  
原始模式:单个 6.242(1019)  
背景模式:无 组 1 - 事件 1



## 004 Red phosphorus Sample Test Spectra



ID#:1 保留时间: N.D. (W/B) (扫描数:1019)  
质量峰:151  
原始模式:单个 6.242(1019)  
背景模式:无 组 1 - 事件 1

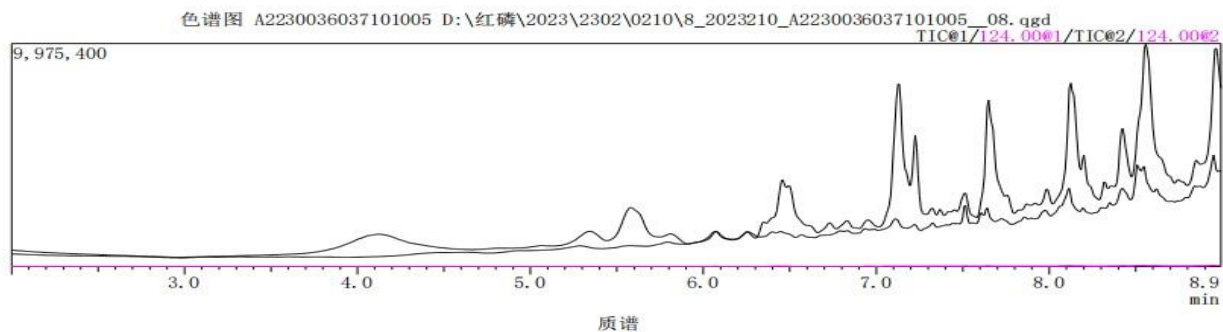


## Test Report

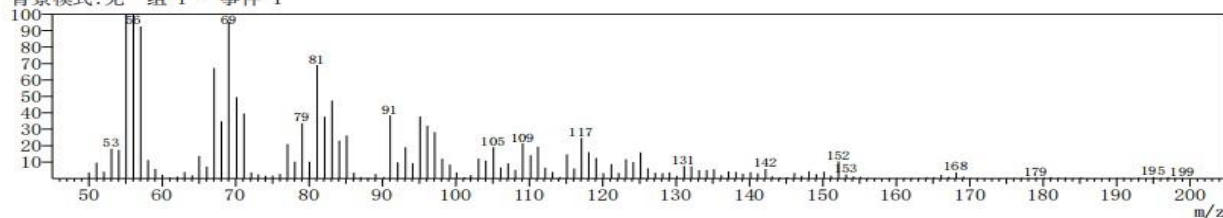
Report No. A223003603710101

Page 19 of 25

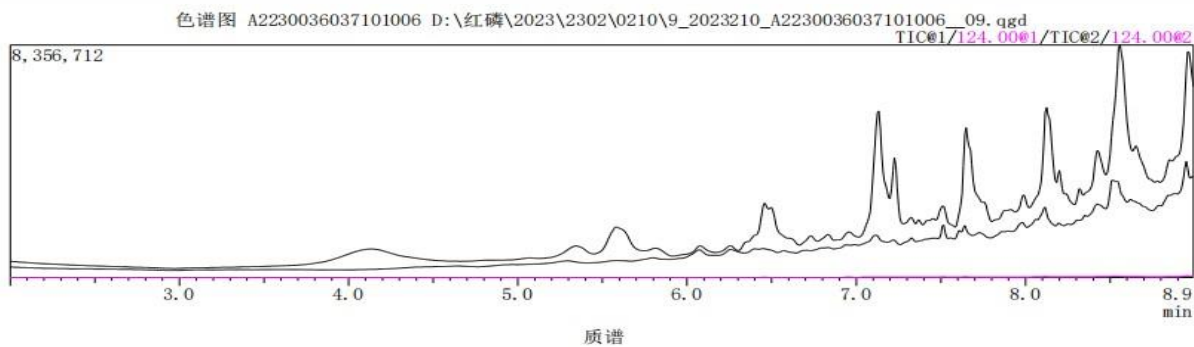
### 005 Red phosphorus Sample Test Spectra



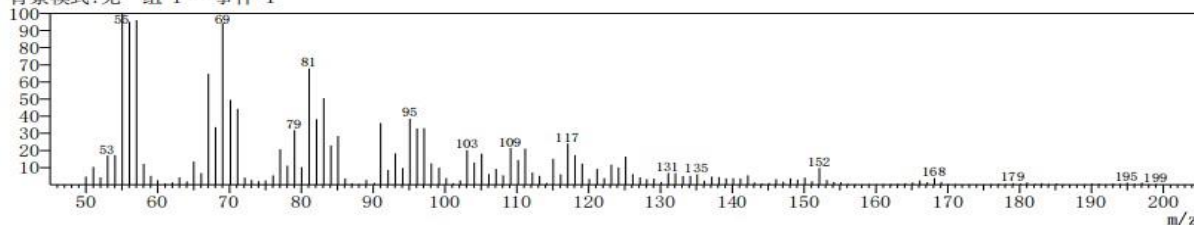
ID#:1 保留时间: N. D. (W/B) (扫描数:1019)  
质量峰:150  
原始模式:单个 6.242(1019)  
背景模式:无 组 1 - 事件 1



### 006 Red phosphorus Sample Test Spectra



ID#:1 保留时间: N. D. (W/B) (扫描数:1019)  
质量峰:151  
原始模式:单个 6.242(1019)  
背景模式:无 组 1 - 事件 1

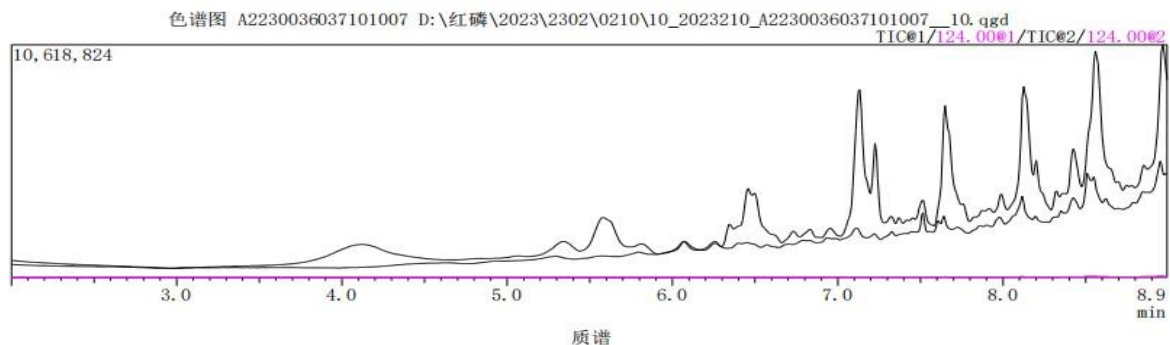


## Test Report

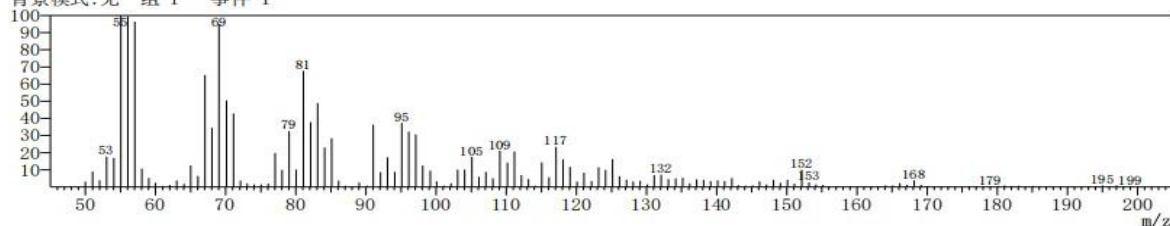
Report No. A223003603710101

Page 20 of 25

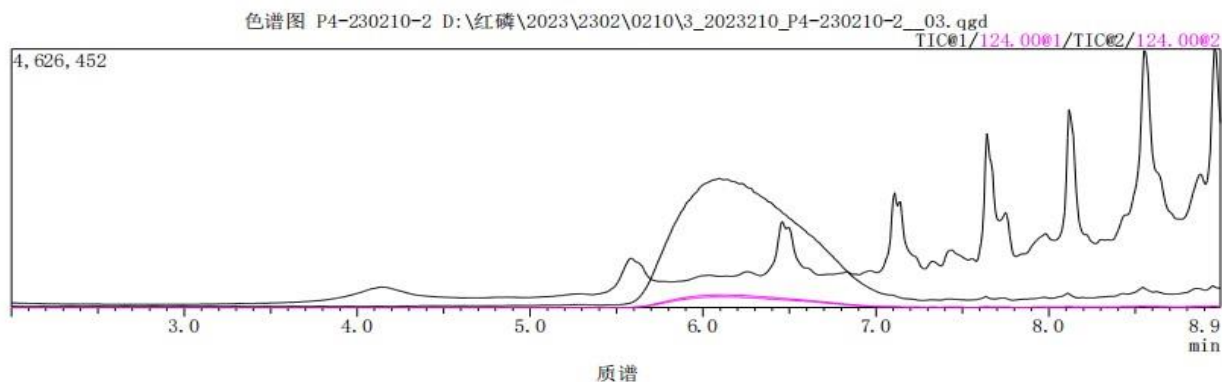
### 007 Red phosphorus Sample Test Spectra



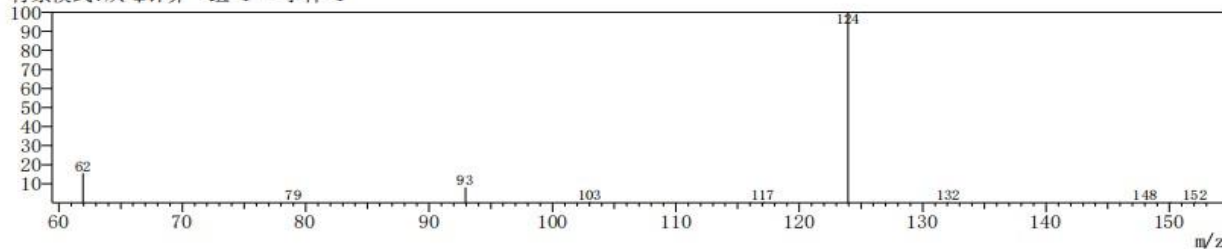
ID#:1 保留时间: N. D. (W/B) (扫描数:1019)  
质量峰:151  
原始模式:单个 6.242(1019)  
背景模式:无 组 1 - 事件 1



### Standard Material Test Spectra



ID#:1 保留时间:6.100(扫描数:985)  
质量峰:11  
原始模式:平均 6.092-6.108(983-987)  
背景模式:从峰计算 组 1 - 事件 1



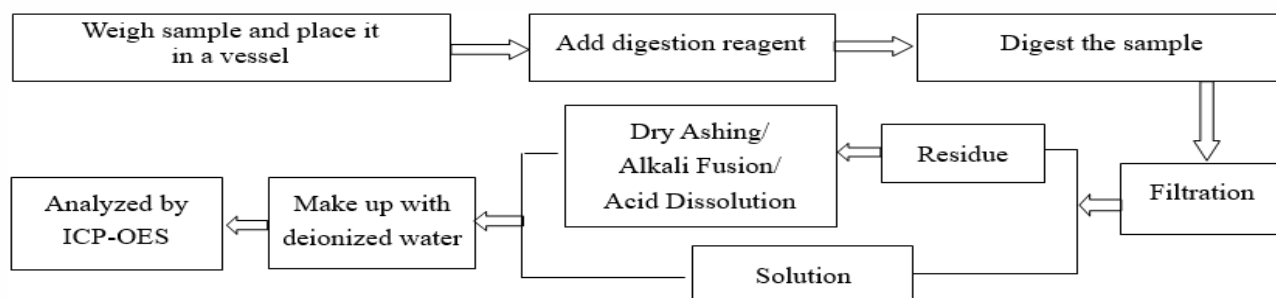
# Test Report

Report No. A223003603710101

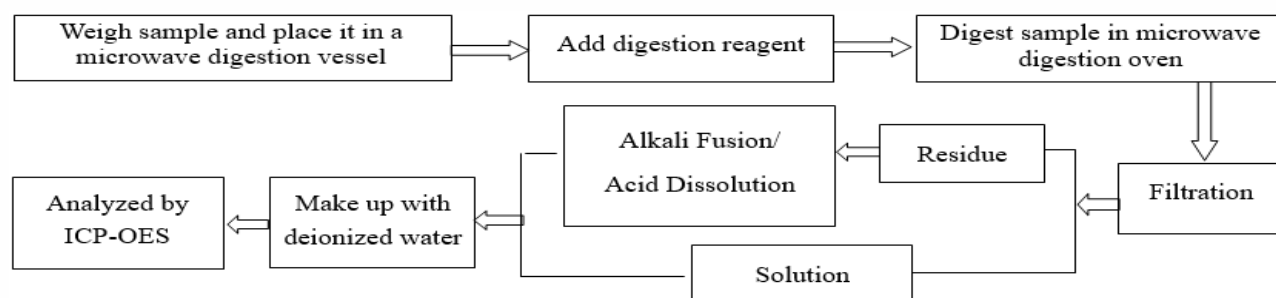
Page 21 of 25

## Test Process

### 1. Lead (Pb), Cadmium (Cd), Chromium(Cr)

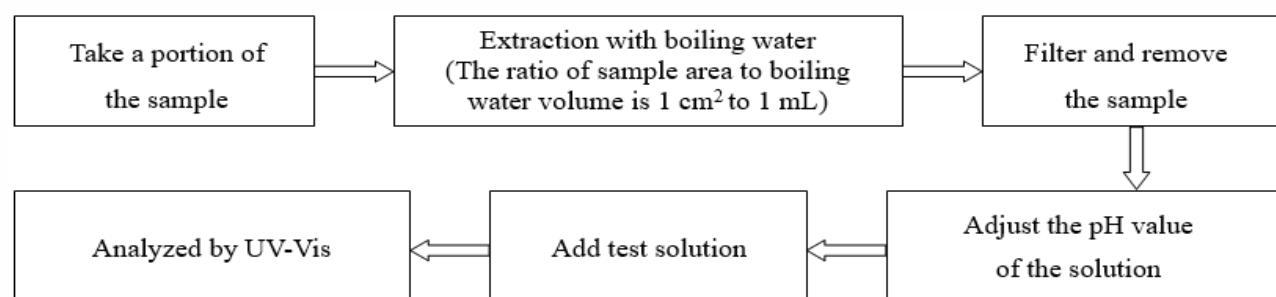


### 2. Mercury (Hg)

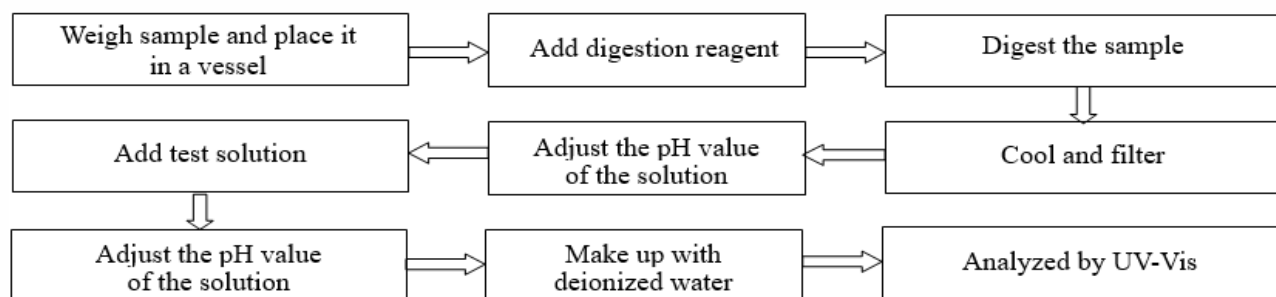


### 3. Hexavalent Chromium (Cr(VI))

#### (1) IEC 62321-7-1:2015



#### (2) IEC 62321-7-2:2017

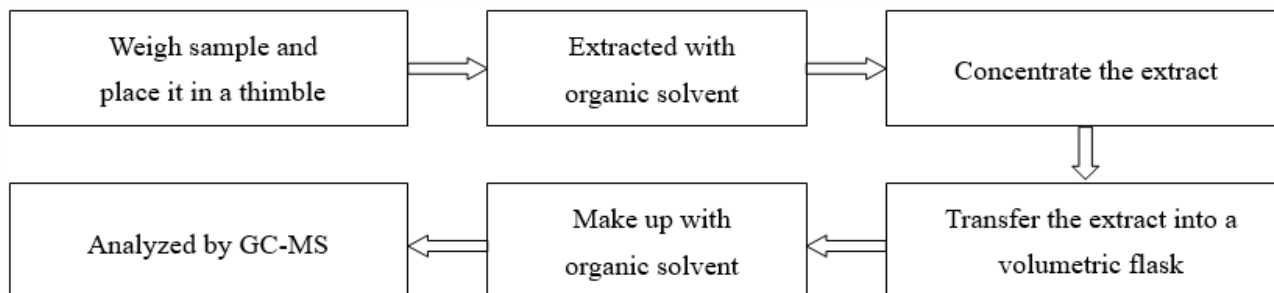


# Test Report

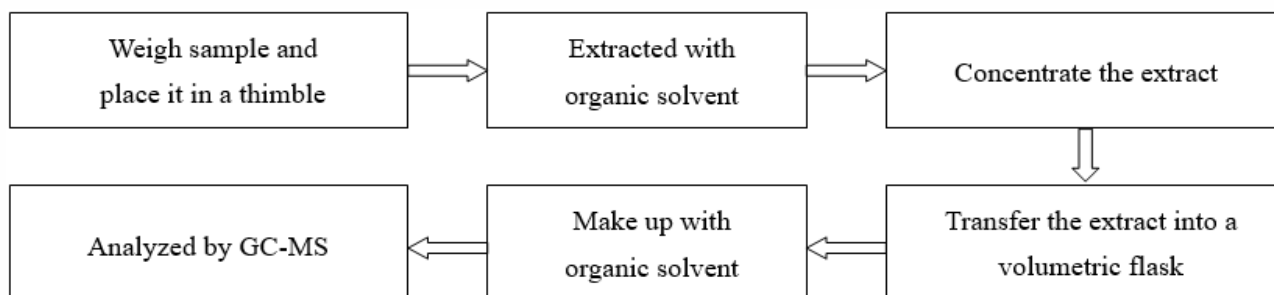
Report No. A223003603710101

Page 22 of 25

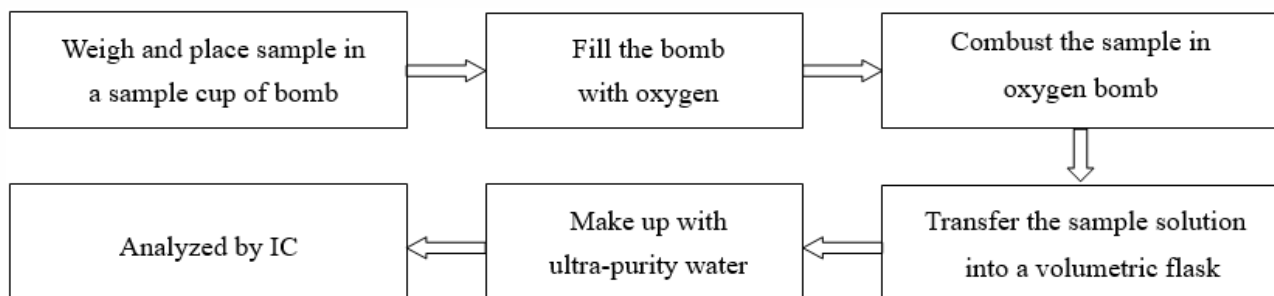
## 4. Polybrominated Biphenyls (PBBs), Polybrominated Diphenyl Ethers (PBDEs)



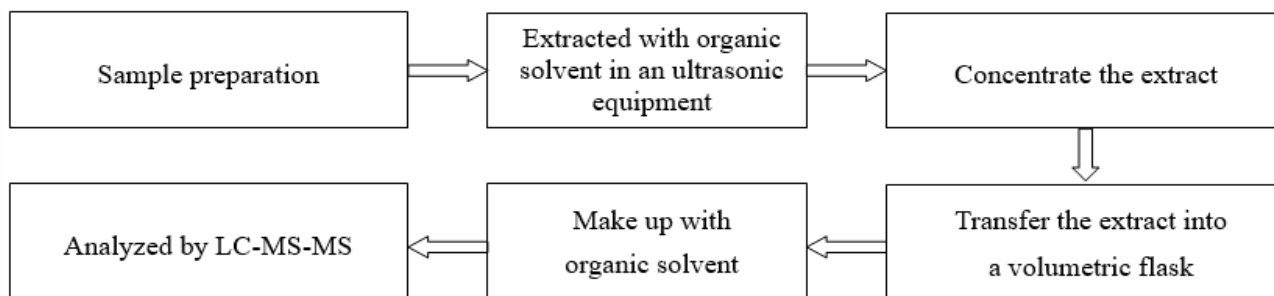
## 5. Phthalates (DBP, BBP, DEHP, DIBP)



## 6. Fluorine (F), Chlorine (Cl), Bromine (Br), Iodine (I)



## 7. Perfluorooctane Sulfonates(PFOS)

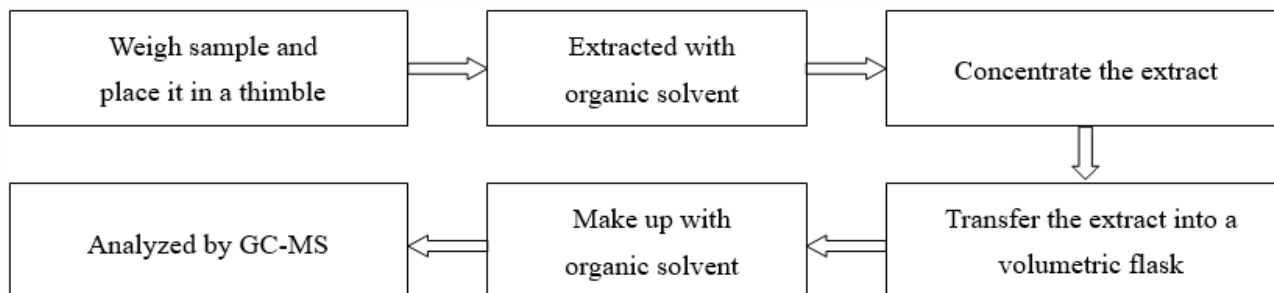


# Test Report

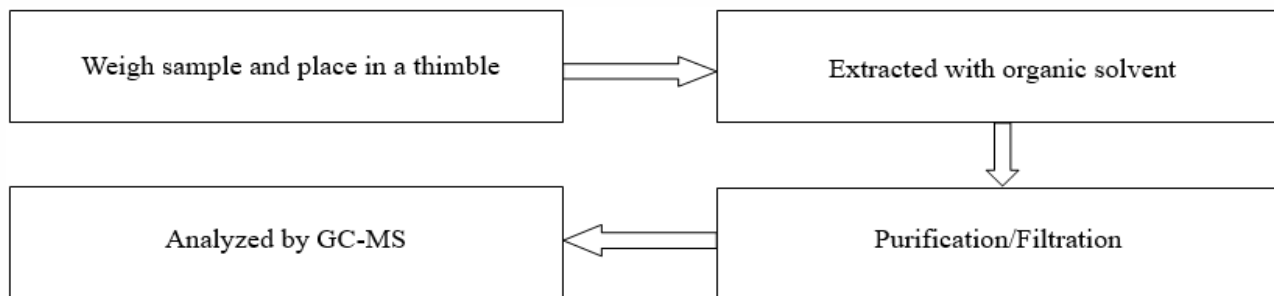
Report No. A223003603710101

Page 23 of 25

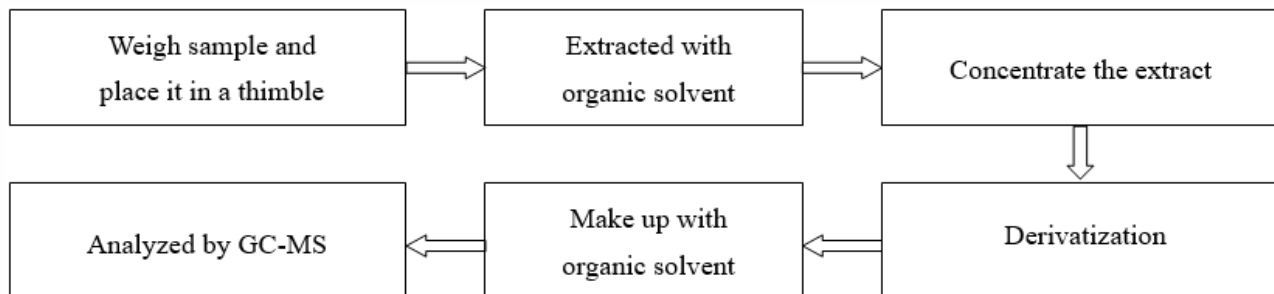
## 8. Phthalates



## 9. Polycyclic Aromatic Hydrocarbons (PAHs)



## 10. Tetrabromobisphenol A (TBBP-A)



# Test Report

Report No. A223003603710101

Page 24 of 25

## Photo(s) of the sample(s)



A2230036037101001



A2230036037101002



A2230036037101003



A2230036037101004



A2230036037101005



A2230036037101006



# Test Report

Report No. A223003603710101

Page 25 of 25



**Statement:**

1. This report is considered invalid without approved signature, special seal and the seal on the perforation;
2. The Company Name shown on Report and Address, the sample(s) and sample information was/were provided by the applicant who should be responsible for the authenticity which CTI hasn't verified;
3. The result(s) shown in this report refer(s) only to the sample(s) tested;
4. Without written approval of CTI, this report can't be reproduced except in full;
5. In case of any discrepancy between the English version and Chinese version of the testing reports (if generated), the Chinese version shall prevail.

\*\*\* End of Report \*\*\*

## Appendix

### Client Reference Information

#### 無鹵電線/CABLE

SPE-1 SPE-2 SPE-3	H03Z1Z1-F	H05Z1Z1-F
NISPE-1 NISPE-2	H03Z1Z1H2-F	H05Z1Z1H2-F
SVE SJE SE	--	H05BQ-F
EVE EVJE	--	--

#### Statement:

1. The Appendix Information was/were provided by the applicant who should be responsible for the authenticity which CTI hasn't verified.
2. The Appendix Information is/are the supplement(s) for the Report A223003603710101.